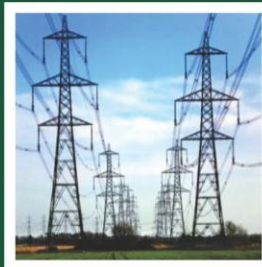


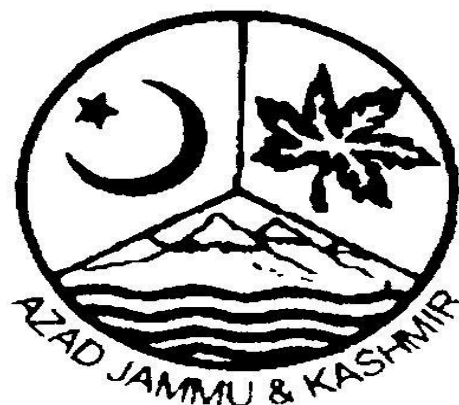


**Azad Government of the State of  
Jammu & Kashmir**

**AZAD JAMMU & KASHMIR  
AT A GLANCE  
2015**



**AJ&K Bureau of Statistics**  
**Planning & Development Department**



# **AZAD JAMMU & KASHMIR, AT A GLANCE**

**2015**

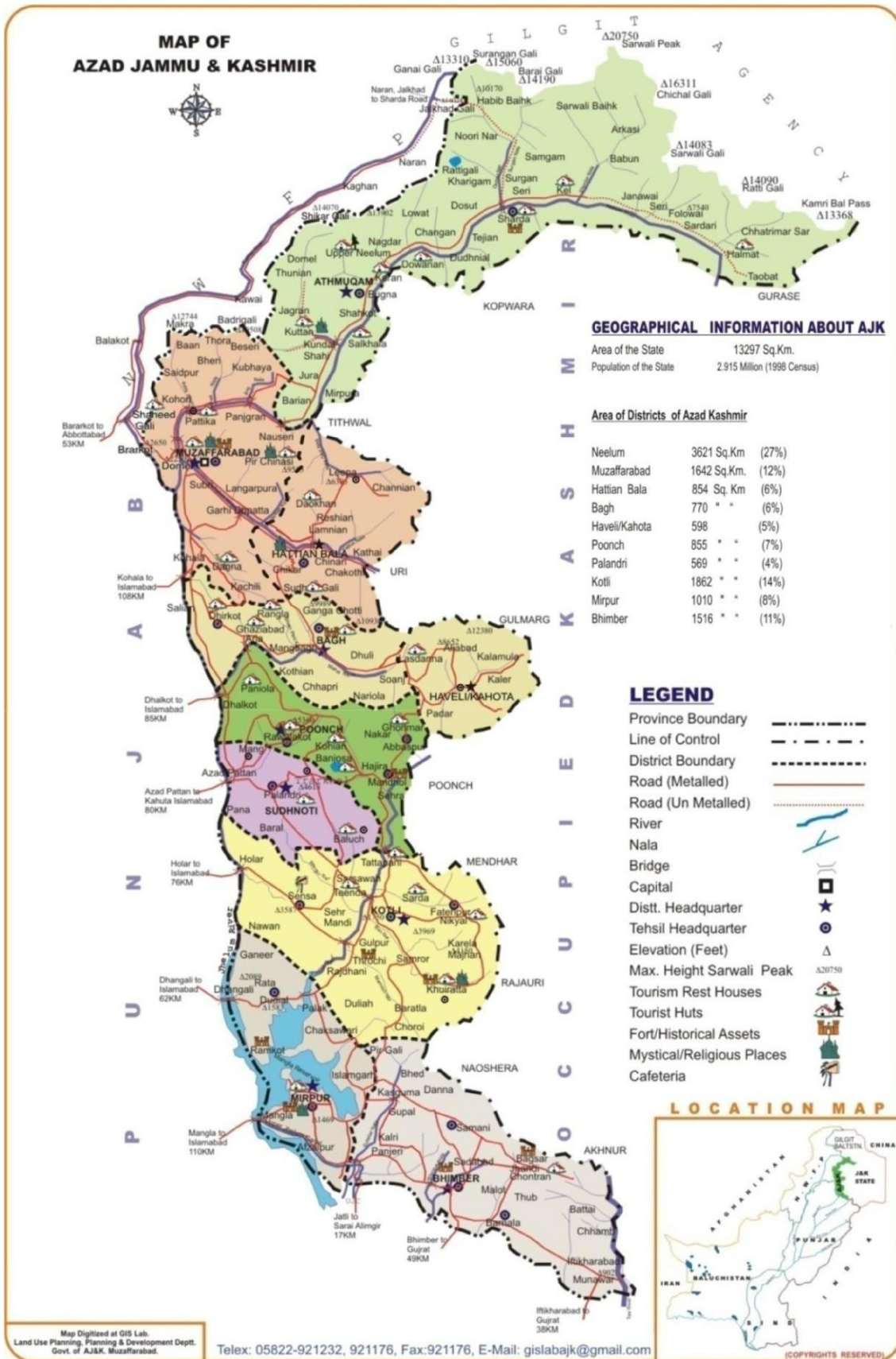
**BY**

**AJK BUREAU OF STATISTICS**

**PLANNING & DEVELOPMENT DEPARTMENT MUZAFFARABAD**

## CONTENTS

Map of Azad Kashmir	01
Foreword	02
Preamble	03
Profile of AJK Region	04-06
Vital Statistics of AJK & Pakistan	07
Administrative Set Up	08-10
Divisions, Districts & Sub Divisions of AJ&K	11
AJK District. Subdivision, Union Councils & Village	12
Government	13-14
Area & Population	16-25
Social Infrastructure	26
Health	28-33
AJKRSP	34-35
Education	36-57
Social Welfare & Women Development Department	58
Information Technology	59
Police	60-65
Transport	66-67
Physical Infrastructure	68
Roads & Communication	70-70
Power	72-76
Telecommunication	77
Postal Facilities	78
Piped Water Supply & Sanitation	79-81
Productive Sector	82
Agriculture in AJ&K	84-90
Livestock Population and Domestic Poultry Birds by Administrative Units	91-93
Wild life & Fisheries	94
Forest	95-97
Industries & Minerals	98-101
Tourism	102-103
Development Outlays (1955-2013)	104-109
District wise Income & Expenditure of Municipal Committees	110-111
Metric Conversion Table	112-113



## **Foreword**

It is a point of great pleasure for us that P&DD despite its meager resources has been maintaining printing of statistical publications on regular basis. The final version of the “AJK AT A Glance 2015” containing vital statistical data is completed and readily available for dissemination to the primary and secondary users. This booklet is the only source containing vital statistics on socio-economic indicators of the State. The key information in it is catalyst for informed decisions making and realistic planning. It is also instrumental for policy designers and planners in both public and private sector.

The “Azad Kashmir AT A Glance” is the only reference book for important AJK’s statistics containing sector-wise information which was regularly published by the P&DD. The task of publishing “Azad Kashmir AT A Glance 2015” is now designated to the AJKBoS and it has succeeded in producing this document with an active support from P&DD and the Line Departments.

I would like to appreciate the efforts of the staff of AJKBoS and P&DD who proactively worked for the production of this quality document, virtually instrumental for all the development partners within AJK and outside it.

My special thanks are also due for all the stakeholders/Line Departments of GoAJK for their continuous and unprecedented support in providing timely and adequate information without which the publication of this reference book would have not been possible at all.

As the establishment of AJKBoS would help removing the capacity and skill gaps in data collection and management in AJK so I am expecting a significant improvement in this document in future. Your inputs and suggestions in this context are vital and would be appreciated and acknowledged at all levels.

**(Mansoor Qadir Dar)**  
**Secretary P&DD, GoAJK**  
**Muzaffarabad**

## **PREAMBLE**

The State of Azad Jammu and Kashmir is endowed with abundant natural resources and ample human resource dominated by talented and educated youth. These precious endowments need to be exploited optimally while the Government of AJK is doing its level best to harvest these valuable assets in a way that could help improving the socio-economic conditions of the people of AJK. The availability of credible statistics is key input in this context and AJKBoS with generous support from the Statistics Section of P&DD has been making tremendous efforts to fill the prevailing data gaps, which certainly warrants special appreciation. Here, the co-operation and generous support from the Government of Pakistan, Federal agencies and other development partners is gratefully acknowledged. It also merit special thanks for its contribution in bridging the information and resource gaps in AJK data collection and management.

“Azad Kashmir AT A Glance” is a regular annual publication now mandated to be produced by AJKBoS. It is a brief reference book for important AJ&K Statistics containing data on almost all development sectors of the State Economy at various administrative levels along with some important national statistics on key indicators necessary to make comparison with national indices.

The present issue of the Azad Kashmir AT A Glance is 20th in the series. The scope of this unique publication is determined in consultation with the stakeholders/ Line Departments along with active support of data producing agencies. However, it remained under constant review and thus the format of the forthcoming issue of this document is modified in light of the feedback form the concerned Departments to enhance the credibility and utility of this unique document.

I take this opportunity to extend my heartiest thanks for the support provided to AJKBoS in its infancy by the different Federal and State Organizations along with Autonomous Bodies by timely furnishing the data key to this publication.

AJKBoS would highly appreciate valuable comments and suggestions from the stakeholders/ Line Departments for improving the format and contents of forthcoming “AJK AT A Glance” issues.

**(Muhammad Shamoan Hashmi)**  
**Director General,**  
**AJ&K Bureau of Statistics**

## PROFILE OF AJ&K REGION

### **Geographical and Socio-Economic conditions:**

#### **Topography**

The state of Azad Jammu and Kashmir lies between longitude 73° – 75° and latitude 33° – 36° and comprises an area of 5,134 square miles (13,297 square kilometers). AJ&K falls within the Himalayan organic belt. As such, its topography is mainly hilly and mountainous characterized by deep ravines, rugged, and undulating terrain. The northern districts (Neelum, Muzaffarabad, Hattian, Bagh, Haveli, Poonch, and Sudhnoti) are generally mountainous while southern districts (Kotli, Mirpur, and Bhimber) are relatively plain. The mountain ecosystems are relatively unstable and have low inherent productivity. Within this fragile environment, however, there is a great variety of ecological niches upon which people base their livelihood. Small land holdings and scarcity of cultivable land are the main factors limiting on-farm income. The area is full of natural beauty with thick forests, fast flowing rivers and winding streams. Main rivers are Jhelum, Neelum and Poonch.

#### **Climate**

Depending on the altitude that varies from 360 meters in the South to 6,325 meters in the North, AJ&K has a wide range of climatic conditions. The South has dry sub-tropical climate while the North most moist temperate. There is significant variation in the rainfall pattern across different regions both in terms of amount and distribution. Average annual rainfall ranges from 1000 mm to 2000 mm. In the northern districts 30% to 60% precipitation is in the shape of snow. In winter, snow line is around 1200 meters while in summer it is 3300 meters. Average maximum temperature ranges from 20°C to 32°C while the average minimum temperature range is 04 to 07°C

#### **Soil**

Based on the location, the soil in AJ&K can be broadly grouped into 03 categories:

Soil of mountain plateau is generally leached and relatively infertile.

Soil of mountain slopes is gravelly loam, shallow and deficient in organic matter.

Soil of inter-mountainous valleys is alluvial with a high agricultural potential.

## REGIONAL VARIATIONS

The terrain, resources and socio-economic conditions vary across different regions. Muzaffarabad Division, the largest division is less accessible and the poorest, especially the northern part of District Neelum. As one moves south from Muzaffarabad towards Bagh, then Poonch, Sudhnoti and Kotli, the valley widens up and agricultural production increases. The area is more accessible, especially from Pakistan. The line of control (LOC) area with Indian occupied Kashmir (IOK) remains a restricted zone; otherwise life carries on as usual. Kotli is partially hilly whereas Bhimber and Mirpur are plains and similar to agricultural regions of northern Punjab. Settlement size is larger here and rich in agricultural production.

### Geographical Feature

Area	5134 Sq. Miles 13297 Sq Km. 1.330 Million Hectors 3.286 Million Acres
Longitude Latitude	73° — 75° 33°— 36°
Topography	Mainly hilly and Mountainous with terraces, Valleys and Plains at some places.
Climate Temperature	Sub-tropical highland type Maximum 45.2°C Minimum -02.6 °C
Rainfall	1300 mm on the average
Elevation from sea:- Range from South Range from North	360 meters ASL 6325 meters ASL
Snow Line In Winter around In Summer around	1200 meters ASL 3300 meters ASL
Main Rivers	Jhelum , Neelum & Poonch

\*ASL = Above Sea Level



## **Languages**

Urdu is the official language of Azad Jammu & Kashmir but is spoken by only a minority of people. Other languages are Gojri, Kashmiri and Pahari. The dominant language spoken in the state is Pahari with different accent which is very similar to Pothwari and Hindko.

## **Economic Development**

At the time of partition in 1947, the economy of Azad Jammu and Kashmir was on subsistence level but the determination to develop the area was there. In early 70's, economic development of the area started in earnest. Despite financial constraints, planners made good efforts in laying down a proper path for the rapid development of the area.

## **Per Capita Income and Employment:-**

The majority of the rural population depends on forestry, livestock, agriculture and non-formal employment to eke out its subsistence. National average per capita income has been estimated to be US \$1512 and according to Labour Force Survey (LFS) unemployment rate in AJ&K is 14.4%\*\*. In line with the National trends, indicators of social sector particularly health and population have not shown much proficiency. Efforts have been made during the recent past to make up this deficiency so that the fruits of development can be brought to the door step of every common man.

\*Economic survey of Pakistan 2014-15

\*\*LFS, Pakistan 2014-15

**VITAL STATISTICS OF AJ&K AND PAKISTAN (2015).**

<b><u>Description</u></b>	<b><u>AJ&amp;K</u></b>	<b><u>Pakistan</u></b>
Area (Sq.km)	13,297	796,096
Cultivated land (%)	13	22.10
Villages	1771	48344
Population (projected in million)	4.466	191.71
Population Growth Rate (%)	2.41	1.92
Unemployment Rate per Annum (%)	14.4	06
Literacy Rate (%)	77	60
Gross Enrollment Rate Primary Boys (%)	112	97
Gross Enrollment Rate Primary Girls (%)	103	81
Road density (km/sq. km)	0.67	0.32
Infant Mortality Rate (per 1000)	58	64
Population per hospital bed	1158	1591
Population per doctor	5058	1073
Mothers Mortality Rate (per 1000)	*201	178
Immunization Coverage (%)	94	75
Per capita power availability (KWH)	353	357
Rural/Urban ratio	88:12	60:40
Population Density (Per sq. Km)	336	247
Per Capita Income (per annum) US\$	1512	1512

Sources:-  
i. Pakistan Bureau of Statistics, Islamabad.  
ii. Departments., of Health, Education & Public Works, Muzaffarabad.  
iii. Economic Survey of Pakistan 2014-15  
iv. Education Department, Muzaffarabad.  
\* AJK MICS 2007-2008

## ADMINISTRATIVE SET UP



### ADMINISTRATIVE SET UP 2015

Azad Jammu & Kashmir is divided into three divisions (Muzaffarabad, Poonch & Mirpur) and ten administrative districts with Muzaffarabad as the capital of the State. The Muzaffarabad Division comprises of Muzaffarabad, Hattian and Neelum districts, Poonch Division comprises of Bagh, Haveli, Poonch & Sudhnoti districts whereas Mirpur Division consists of Mirpur, Kotli & Bhimber districts. These ten districts are further divided into 32 Subdivisions, 194 Union Councils and 1771 Revenue Villages. There are 5 Municipal Corporations, 13 Municipal Committees, 18 Town Committees and 31 Markaz Councils, which are administrated by the Local Government & Rural Development Department (LG&RDD).

#### Administrative Set Up 2015

Divisions	03
Districts	10
Sub Divisions	32
Thana / Police Stations	46
Development Authorities	05
Markaz Councils	31
Villages	1771
Municipal Committees	13
Municipal Corporations	05
Town Committees	18
Union Councils	194

Source:-Board of Revenue, Muzaffarabad.

**DIVISIONS, DISTRICTS & SUB DIVISIONS OF AJ&K 2015**

<b>Division</b>	<b>District</b>	<b>Sub-Division</b>	<b>No. of Villages</b>	<b>Total</b>
<b>Muzaffarabad</b>	Muzaffarabad	Muzaffarabad	286	Districts = 03 Sub-Division = 07 Villages = 670
		Pattika(Naseerabad)	129	
	Neelum	Athmuqam	63	
		Sharda	25	
	Hattian	Hattian Bala	110	
		Leepa	33	
		Chikar	24	
<b>Poonch</b>	Bagh	Bagh	52	Districts = 04 Sub-Division = 14 Villages = 414
		Dhirkot	61	
		Harighel	27	
	Haveli	Haveli	44	
		Khurshidabad	16	
		Mumtazabad	31	
	Poonch	Rawalakot	53	
		Hajira	44	
		Thorar	07	
		Abbaspur	18	
	Sudhnoti	Pallandri	27	
		Tararkhal	11	
		Mang	06	
		Baloch	17	
<b>Mirpur</b>	Mirpur	Mirpur	176	Districts = 03 Sub-Division = 11 Villages = 687
		Dadyal	70	
	Kotli	Kotli	84	
		Khuratta	26	
		Fatehpur	18	
		Sehnsa	71	
		Charhoi	19	
		Darlian Jattan	16	
	Bhimber	Bhimber	66	
		Samahni	47	
		Barnala	94	
<b>03</b>	<b>10</b>	<b>32</b>	<b>1771</b>	

Source:-Board of Revenue, Muzaffarabad.



**AJ&K DISTRICTS, SUB-DIVISIONS, UNION COUNCILS & VILLAGES 2015**

<b>District</b>	<b>Sub-Divisions</b>	<b>Union Councils</b>	<b>Villages</b>
Muzaffarabad	2	28	415
Hattian	3	12	167
Neelum	2	09	88
Bagh	3	19	140
Haveli	3	09	91
Poonch	4	26	122
Sudhnoti	4	19	61
Kotli	6	36	234
Mirpur	2	18	246
Bhimber	3	18	207
<b>AJ&amp;K</b>	<b>32</b>	<b>194</b>	<b>1771</b>

Source:- Board of Revenue, Muzaffarabad.



**GOVERNMENT**

Azad Jammu & Kashmir has a parliamentary form of Government. The President of Azad Jammu and Kashmir is the Constitutional Head of the State, while the Prime Minister, supported by a Council of Ministers, is the Chief Executive. AJ&K has its own Legislative Assembly comprising 41 of direct and 8 indirect elected members, a member each from Technocrats, Mashaikhs, Overseas Kashmiris and 5 female members. The AJ&K has its institutions of the Supreme Court, High Court and Sharia Court.

**Presidents of Azad Jammu & Kashmir**

S.#	Name	From	To
1.	Sardar Muhammad Ibrahim Khan	24 <sup>th</sup> Oct,1947	12 <sup>th</sup> May 1950
2.	Col.(R)Syed Ali Ahmed Shah	13 <sup>th</sup> May, 1950	04 <sup>th</sup> Dec, 1951
3.	Mir Waiz Molana Muhammad Yousaf Shah	05 <sup>th</sup> Dec, 1951	20 <sup>th</sup> June, 1952
4.	Colonel(R)Sher Ahmed Khan	21 <sup>st</sup> June, 1952	30 <sup>th</sup> May, 1956
5.	Mir Waiz Molana Muhammad Yousaf Shah	31 <sup>st</sup> May, 1956	07 <sup>th</sup> Sep, 1956
6.	Sardar Muhammad Abdul-Qayyum Khan	08 <sup>th</sup> Sep, 1956	12 <sup>th</sup> April,1957
7.	Sardar Muhammad Ibrahim Khan	13 <sup>th</sup> April,1957	30 <sup>th</sup> April,1959
8.	Mr. K.H. Khursheed	01 <sup>st</sup> May, 1959	06 <sup>th</sup> Aug, 1964
9.	Khan Abdul Hameed Khan	07 <sup>th</sup> Aug, 1964	07 <sup>th</sup> Oct, 1969
10.	Brig. (later Maj. Gen) Abdur-Rahman	08 <sup>th</sup> Oct, 1968	11 <sup>th</sup> Nov, 1970
11.	Sardar Muhammad Abdul-Qayyum Khan	12 <sup>th</sup> Nov, 1970	15 <sup>th</sup> Apr, 1975
12.	SheikhManzarMasaud(Acting President)	16 <sup>th</sup> April,1975	04 <sup>th</sup> June,1975
13.	Sardar Muhammad Ibrahim Khan	05 <sup>th</sup> June, 1975	30 <sup>th</sup> Oct, 1978
14.	Brig(R)Muhammad Hayat Khan	1 <sup>st</sup> Nov, 1978	31 <sup>st</sup> Jan, 1983
15.	Major General(R)Abdur-Rahman	1 <sup>st</sup> Feb, 1983	29 <sup>th</sup> Sep, 1985
16.	Sardar Muhammad Abdul-Qayyum Khan	30 <sup>th</sup> Sep, 1985	19 <sup>th</sup> July, 1991
17.	Sahibzada Muhammad Ishaq Zafar (Acting President)	20 <sup>th</sup> July,1991	28 <sup>th</sup> July, 1991
18.	Mr. Abdul Rashid Abbasi (Acting President)	29 <sup>th</sup> July, 1991	11 <sup>th</sup> Aug, 1991
19.	Sardar Sikandar Hayat Khan	12 <sup>th</sup> Aug,1991	11 <sup>th</sup> May, 1996
20.	Abdul Rashid Abbasi(Acting President)	12 <sup>th</sup> May,1996	22 <sup>nd</sup> May, 1996

21. Sardar Sikandar Hayat Khan	23 <sup>rd</sup> May, 1996	11 <sup>th</sup> Aug, 1996
22. Raja Mumtaz Hussain Rathore	12 <sup>th</sup> Aug, 1996	24 <sup>th</sup> Aug, 1996
23. Sardar Muhammad Ibrahim Khan	25 <sup>th</sup> Aug, 1996	24 <sup>th</sup> Aug, 2001
24. Major General(R)Sardar Muhammad Anwar Khan	25 <sup>th</sup> Aug, 2001	24 <sup>th</sup> Aug, 2006
25. Raja Zulqurnain Khan	25 <sup>th</sup> Aug, 2006	24 <sup>th</sup> Aug, 2011
26. Sardar Muhammad Yaqoob Khan	25 <sup>th</sup> Aug, 2011	Continued

### Prime Ministers of Azad Jammu & Kashmir

	Name	From	To
1.	Khan Abdul Hameed Khan	5 <sup>th</sup> June, 1975	11 <sup>th</sup> Aug, 1977
2.	Sardar Sikandar Hayat Khan	17 <sup>th</sup> June, 1985	28 <sup>th</sup> June, 1990
3.	Mumtaz Hussain Rathore	29 <sup>th</sup> June, 1990	5 <sup>th</sup> July, 1991
4.	Sardar Muhammad Abdul-Qayyum Khan	29 <sup>th</sup> July, 1991	29 <sup>th</sup> July, 1996
5.	Barrister Sultan Mehmood Chaudry	30 <sup>th</sup> July, 1996	24 <sup>th</sup> July, 2001
6.	Sardar Sikandar Hayat Khan	25 <sup>th</sup> July, 2001	23 <sup>rd</sup> July, 2006
7.	Sardar Attique Ahmed Khan	24 <sup>th</sup> July, 2006	6 <sup>th</sup> Jan, 2009
8.	Sardar Muhammad Yaqoob Khan	7 <sup>th</sup> Jan, 2009	21 <sup>st</sup> Oct, 2009
9.	Raja Farooq Haider Khan	22 <sup>nd</sup> Oct, 2009	28 <sup>th</sup> July, 2010
10.	Sardar Attique Ahmed Khan	29 <sup>th</sup> July, 2010	25 <sup>th</sup> July, 2011
11.	Chaudry Abdul Majid	26 <sup>th</sup> July, 2011	Continued.....

### Chief Executives of the Azad Jammu & Kashmir

S.#	Name	From	To
1.	Major General(R)Abdul Rahman	12 <sup>th</sup> August 1977	31 <sup>st</sup> Oct, 1977
2.	Brigadier(R) Mohammad Hayat Khan	1 <sup>st</sup> Nov, 1978	31 <sup>st</sup> Jan, 1983
3.	Major General(R)Abdul Rahman	1 <sup>st</sup> Feb, 1983	3 <sup>rd</sup> Sep, 1985
4.	Sardar Muhammad Ashraf	5 <sup>th</sup> July, 1991	29 <sup>th</sup> July, 1991



## AREA & POPULATION



**POPULATION:-**

According to the 1998 population census, the State of Azad Jammu & Kashmir had a population of 2.973 million, which has grown to 4.466 million in 2015. Almost 100% population is Muslim. The Rural to Urban ratio is 88:12. The population density is 336 persons per Sq Km.

The literacy rate has increased from 55% to 76% after 1998 census. Infant Mortality Rate is approximately 58 per 1000 live births, whereas the immunization rate for the children under 5 years of age is more than 94%.

**Total area of Azad Jammu & Kashmir**                      **13,297 sq. Kms**

(5,134 sq. Miles)

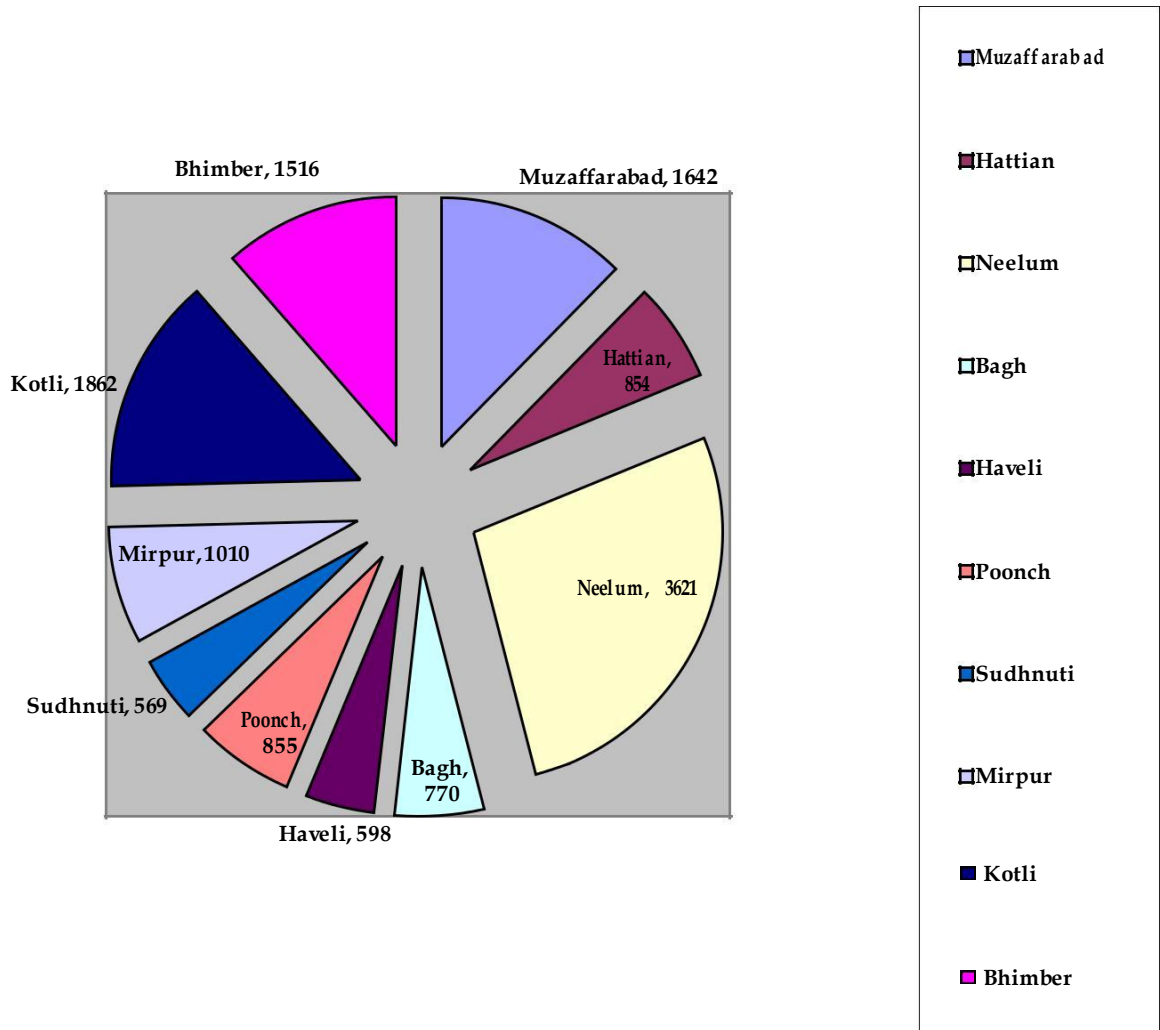
**Total Population of Azad Jammu & Kashmir**                      **44, 66,000**

(4.466million)

<b>District-Wise Area, Population, Density, Growth Rate &amp; Household-Size in Azad Jammu &amp; Kashmir (Project on the basis on 1998 census)</b>						
<b>Districts</b>		<b>Population Census 1998 (million)</b>		<b>MICS 2007-08</b>	<b>Projected Population 2015(million)</b>	
		<b>Population</b>	<b>Growth Rate</b>	<b>House-hold Size</b>		
Muzaffarabad	1642	0.454	2.80%	5.8	0.726	442
Neelum	3621	0.126	2.80%	7.6	0.201	56
Hattian	854	0.166	2.80%	5.8	0.265	311
Bagh	770	0.282	2.00%	6.8	0.395	513
Haveli	598	0.112	2.00%	6.8	0.157	262
Poonch	855	0.411	2.24%	6.8	0.599	701
Sudhnoti	569	0.224	1.99%	6.6	0.313	550
Kotli	1862	0.563	2.59%	7.3	0.870	467
Mirpur	1010	0.333	2.09%	6.7	0.473	469
Bhimber	1516	0.302	2.60%	6.7	0.467	308
<b>Total</b>	<b>13297</b>	<b>2.973</b>	<b>2.41%</b>	<b>6.7</b>	<b>4.466</b>	<b>336</b>

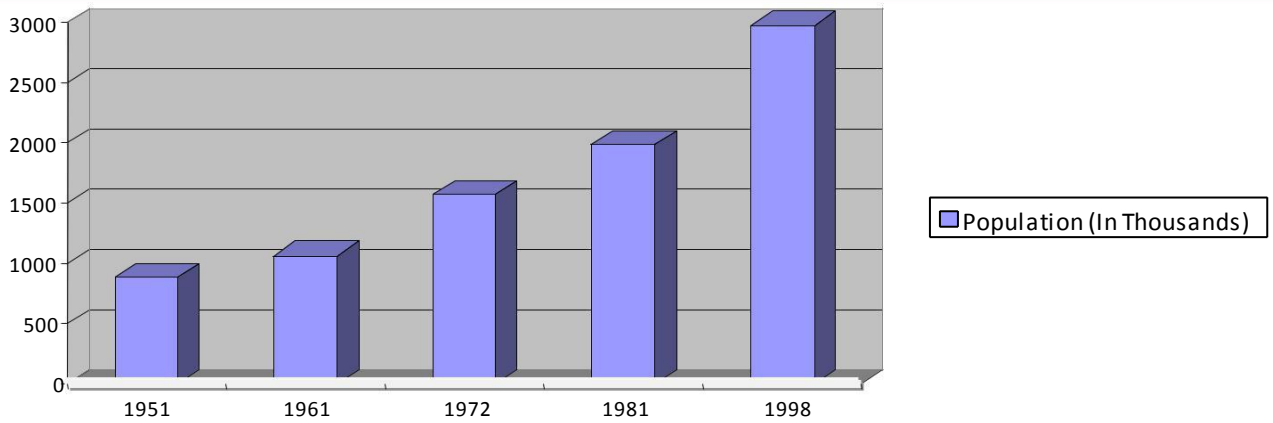
Source:-Population Census Organization, Islamabad.

### DISTRICT WISE AREA OF AJ&K (SQ. KMS)



**POPULATION AND INTERCENSAL INCREASE SINCE 1951**

<b>Description</b>	<b>1951</b>	<b>1961</b>	<b>1972</b>	<b>1981</b>	<b>1998</b>
Population (Thousand)	886	1065	1573	1983.47	2972.50
Intercensal increase (Percent)	-	20.16	47.71	26.11	49.86
Cumulative increase (Percent)	-	20.16	77.54	123.87	235.50
Average Annual Growth rate (Percent)	-	1.87	3.43	2.74	2.41



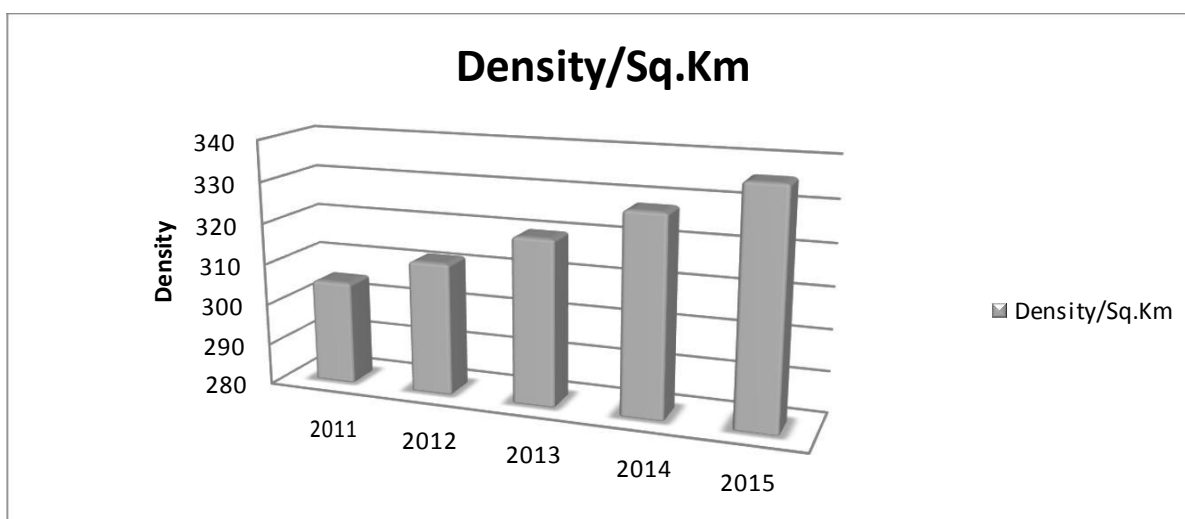
Source:-Population Census Organization, Islamabad





### DENSITY PER SQUARE KILOMETER IN AJ&K

Years	2011	2012	2013	2014	2015
Density /Sq. Km	305	312	320	328	336



Source:-Population Census Organization, Islamabad.

**DISTRICT WISE AREA AND POPULATION OF AJ&K 2015**

Districts	Area		Population	
	Sq. Kms	%	Projected population 2015	%
Muzaffarabad	1642	12.4	0.726	<b>16.25</b>
Neelum	3621	27.2	0.201	<b>4.51</b>
Hattian	854	6.4	0.265	<b>5.94</b>
Bagh	770	5.8	0.395	<b>8.84</b>
Haveli	598	4.5	0.157	<b>3.51</b>
Poonch	855	6.4	0.599	<b>13.41</b>
Sudhnoti	569	4.3	0.313	<b>7.01</b>
Kotli	1862	14.0	0.870	<b>19.47</b>
Mirpur	1010	7.6	0.473	<b>10.60</b>
Bhimber	1516	11.4	0.467	<b>10.46</b>
<b>Total AJ&amp;K</b>	<b>13297</b>	<b>100</b>	<b>4.466</b>	<b>100</b>

Projected on the basis of 1998 Census.

Source:-Population Census Organization, Islamabad.

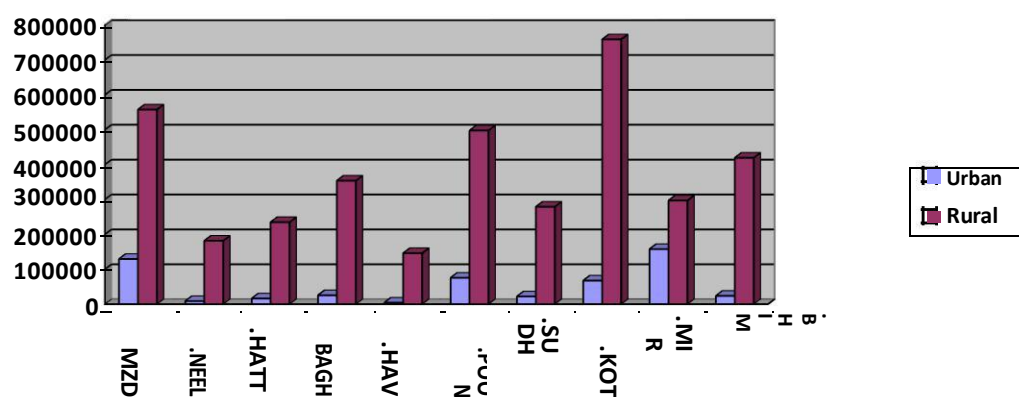
**DISTRICT/GENDERWISE URBAN RURAL POPULATION 1998 CENSUS**

District	Urban			Rural			G. Total		
	Male	Female	Total	Male	Female	Total	Male	Female	Total
<b>MZD</b>	47130	38332	<b>85462</b>	187610	180903	<b>368513</b>	234740	219235	<b>453957</b>
<b>Neelum</b>	3245	2478	<b>5723</b>	62098	57891	<b>119989</b>	65343	60369	<b>125712</b>
<b>Hattian</b>	5329	5311	<b>10640</b>	78861	76463	<b>155424</b>	84190	81774	<b>166064</b>
<b>Bagh</b>	9716	9170	<b>18886</b>	128366	134469	<b>262835</b>	138082	143639	<b>281721</b>
<b>Haveli</b>	1588	1429	<b>3017</b>	58258	50419	<b>108677</b>	59846	51848	<b>111694</b>
<b>Poonch</b>	27626	26477	<b>54103</b>	180209	176723	<b>356932</b>	207835	203200	<b>411035</b>
<b>Sudhnoti</b>	8393	8013	<b>16406</b>	99724	107961	<b>207685</b>	108117	115974	<b>224091</b>
<b>Kotli</b>	24400	21552	<b>45992</b>	251455	265687	<b>517142</b>	275855	287239	<b>563134</b>
<b>Mirpur</b>	60610	55031	<b>115641</b>	109684	108157	<b>217841</b>	170294	163188	<b>333482</b>
<b>Bhimber</b>	8385	7759	<b>16144</b>	142512	142977	<b>285489</b>	150897	150736	<b>301633</b>
<b>G. Total</b>	<b>196422</b>	<b>175552</b>	<b>372014</b>	<b>1298777</b>	<b>1301650</b>	<b>2600527</b>	<b>1495199</b>	<b>1477202</b>	<b>2972523</b>

Source:-Population Census Organization, Islamabad.

**DISTRICT/GENDERWISE URBAN RURAL PROJECTED POPULATION 2015**

District	Urban			Rural			G.Total		
	Male	Female	Total	Male	Female	Total	Male	Female	Total
M.abad	75367	61298	<b>136664</b>	300013	289286	<b>589299</b>	375379	350584	<b>725963</b>
Neelum	5189	3963	<b>9152</b>	99303	92575	<b>191878</b>	104492	96538	<b>201031</b>
Hattian	8522	8493	<b>17015</b>	126109	122274	<b>248383</b>	134631	130768	<b>265399</b>
Bagh	13605	12840	<b>26445</b>	179743	188289	<b>368032</b>	193348	201129	<b>394477</b>
Haveli	2224	2001	<b>4225</b>	81576	70598	<b>152174</b>	83799	72600	<b>156399</b>
Poonch	40260	38585	<b>78845</b>	262622	257542	<b>520163</b>	302882	296127	<b>599009</b>
Sudhnoti	11733	11202	<b>22934</b>	139405	150920	<b>290325</b>	151138	162121	<b>313259</b>
Kotli	37685	33287	<b>70973</b>	388370	410352	<b>798722</b>	426055	4443639	<b>869694</b>
Mirpur	86151	78220	<b>164371</b>	155904	153734	<b>309637</b>	242054	231954	<b>474008</b>
Bhimber	12972	12003	<b>24975</b>	220474	221193	<b>441667</b>	233446	233196	<b>466642</b>
<b>G.total</b>	<b>293708</b>	<b>261892</b>	<b>555599</b>	<b>1953519</b>	<b>1956763</b>	<b>3910280</b>	2247224	6218656	<b>4465881</b>



Source:-Population Census Organization, Islamabad.

**POPULATION FEATURES 2015**

Projected population of AJ&K. (2015)	4.466 million
Male population. (2015)	2.247 million
Female population. (2015)	2.217 million
Gender Ratio (Number of males per 100 females)	101
Average Family Size.	6.7 Members. (MICS2007-08)
Rural - Urban Ratio	88:12
Growth Rate	2.41 %
Population Density 1998 Census.	258 Persons/Sq. Km.
Population Density 2015 projected	336 Persons/Sq.Km.
Literacy Rate	76 %
Religion	Almost 100% Muslims

Projected on the basis of 1998 Census

Source: i. Population Census Organization, Islamabad.

ii. PSLM 2014-15 Survey

# **SOCIAL INFRASTRUCTURE**





**HEALTH 2015**

Health coverage in Azad Jammu & Kashmir is still inadequate. There are approximately 3855 hospital beds available in the area averaging one bed per 1158 people. The total number of Doctors, including Administrative Doctors, Health Managers & Dentists is 1078 out of which there are 57 Health Managers, 76 Dental Surgeons and 826 Medical Officers/Specialists, giving an average 0.18 Per 1000 Population in respect of Medical Officers/Specialists, 0.017 per 1000 Population in respect of Dentists and 0.012 per 1000 population, in respect of Health Managers, whereas at the time of independence there were only 30 hospital beds & 11 dispensaries were available in the area.

**HEALTH STATISTICS**

Health Managers	57
Medical Officers /Specialists	826
Dental Surgeons	76
Other Gazetted Officers	119
Nurses	370
Technicians MCH	336
Paramedics	2448
Other Support Staff	4114
<b>Total</b>	<b>8346</b>
Lady Health Supervisors	141
Lady Health Workers	3067
Other Support Staff	143
<b>Total</b>	<b>3351</b>
Hospital Beds	2805
RHC Beds	600
BHU Beds	450
Population per Hospital Bed	1158
Population per Doctor	5058
Population per Dental Surgeon	58763
Bed Occupancy Rate	64%
Primary Health Cares Services	57%

Source: Directorate of Health, Muzaffarabad

**NUMBER OF HOSPITALS/RHCs/BHUs AND DISPENSARIES WITH THEIR BEDS (2015)**

Districts	Public Sector					
	Hospitals		RHCs		BHUs/Dispensaries	
	No.	Beds	No.	Beds	No.	Beds
Muzaffarabad	3	550	6	72	39	78
Hattian	1	50	6	72	11	22
Neelum	2	130	1	12	21	42
Mirpur	3	750	5	60	23	46
Bhimber	2	200	3	36	25	50
Kotli	4	355	7	84	33	66
Poonch	2	300	7	84	32	64
Bagh	3	300	11	132	20	40
Haveli	1	50	1	12	08	16
Sudhnoti	2	120	3	36	13	26
<b>Total</b>	<b>23</b>	<b>2805</b>	<b>50</b>	<b>600</b>	<b>225</b>	<b>450</b>

Source: Directorate of Health, Muzaffarabad

## DISTRICT WISE HEALTH INSTITUTIONS

Type	Muzaffarabad	Neelum	Hattian	Bagh	Haveli	Poonch	Sudhnoti	Kotli	Mirpur	Bhimber	Total
AIMS	1	-	-	-	-	-	-	-	-	-	1
CMHs	1	-	-	-	-	1	-	-	-	-	2
DHQ Hospitals	-	1	-	1	-	-	1	1	1	1	6
THQ Hospitals	-	1	1	1	1	1	-	3	1	1	10
Civil Hospitals	-	-	-	-	-	-	1	-	-	-	1
TB General Hospital	-	-	-	1	-	-	-	-	-	-	1
New City Teaching Hospital	-	-	-	-	-	-	-	-	1	-	1
Dental Hospital	1	-	-	-	-	-	-	-	-	-	1
RHCs	6	1	6	11	1	7	3	7	5	3	50
BHUs	39	21	11	20	8	32	13	33	23	25	225
Dispensaries	13	-	2	5	10	-	8	18	11	12	79
FAPs (Approved)	41	10	14	19	10	29	16	62	11	20	232
FAPs (Un Approved)	13	8	1	21	9	16	27	48	26	27	196
MCH Centers	38	9	11	23	4	28	13	36	23	16	201
TB/Leprosy Center	8	4	5	10	4	6	7	9	5	6	64
Unani Dispensaries	1	-	1	2	3	-	-	2	2	-	11
Dental Centers	9	2	3	6	2	7	5	8	7	4	53
Teaching Inst. (Nursing School, Paramedics Inst.)	1	-	-	1	-	-	-	1	4	-	7
EPI Centers	55	20	24	33	16	38	26	60	31	40	343
Malaria Centers	44	-	-	32	-	22	11	27	25	6	167
In Service Training Centers	1	-	-	1	-	-	-	-	1	-	3
<b>Total Health Institution</b>	<b>272</b>	<b>77</b>	<b>79</b>	<b>187</b>	<b>68</b>	<b>187</b>	<b>131</b>	<b>315</b>	<b>177</b>	<b>161</b>	<b>1654</b>

Source: Directorate of Health, Muzaffarabad

<b>DISTRICTWISE NUMBER OF DOCTORS, NURSES, LHVs &amp; DAIS/MIDWIVES AJ&amp;K(2015)</b>													
<b>District</b>	<b>Male Female Total Doctors</b>			<b>Male Female Total Nurses</b>				<b>Drug<sub>CDI</sub> DI Inspectors</b>		<b>HEO DHE Health Education officers</b>			<b>/MCH/L.H.V Health Teachers</b>
											<b>ADHE</b>		
Muzaffarabad	99	72	171	-	105	105	2	1	1	1	1	1	56
Neelum	25	4	29	-	22	22	-	-	1		-	-	11
Hattian	14	8	22	-	10	10	-	-	-	-	-	-	11
Bagh	66	9	75	-	29	29	1	-	1	-	-	-	49
Haveli	11	2	13	-	7	7	-	-	-	-	-	-	51
Poonch	49	27	76	-	51	51	1	-	1	-	-	-	23
Sudhnoti	21	4	25	-	4	4	1	-	1	1	-	-	26
Mirpur	35	31	66	-	76	76	1	-	1	1	-	-	32
Kotli	48	22	70	-	41	41	1	-	1	1	-	-	52
Bhimber	16	18	34	-	25	25	1	-	1	-	-	-	14
<b>Total</b>	<b>384</b>	<b>197</b>	<b>581</b>	<b>-</b>	<b>370</b>	<b>370</b>	<b>8</b>	<b>1</b>	<b>8</b>	<b>4</b>	<b>1</b>	<b>1</b>	<b>325</b>

Source: Directorate of Health, Muzaffarabad

**DISTRICTWISE EXPANDED PROGRAMME ON IMMUNIZATION IN AJ&K (2015)****(Children & Women)****(Numbers)**

Distts.	Measles	%	B.C .G	%	OPVO	%	OPV/DPT						Tetanus Toxoid									
							1	%	2	%	3	%	T.T.1	%	T.T.2	%	T.T.3	%	T.T.4	%	T.T.5	%
MZD	21913	95	24783	99	15446	62	22609	98	22464	98	21911	95	21977	86	20763	82	576	2	79	0	21	0
Hattian	7796	93	8320	91	5985	66	7946	95	7834	93	7782	93	6991	75	5963	64	551	6	140	2	36	0
Neelum	6349	99	6794	98	4394	63	6834	107	6599	103	6346	99	5963	84	5254	74	3003	42	111	2	7	0
Bagh	13148	101	13953	99	9521	67	13063	100	12996	100	13080	100	11584	80	9405	65	967	7	302	2	182	1
Haveli	4942	96	5096	91	1809	32	5279	102	5333	103	5126	99	4461	78	3905	68	223	4	0	0	0	0
Poonch	19208	98	21010	99	10075	48	20774	107	19810	102	19968	102	15268	71	13312	62	2289	11	606	3	458	2
Sudhnoti	10224	99	10745	96	9616	86	10240	99	10001	97	9907	96	9762	85	9203	81	600	5	71	1	2	0
Kotli	27024	97	28955	96	27594	92	28316	102	27329	98	26870	97	24146	78	21566	70	1410	5	196	1	145	0
Mirpur	15069	97	16529	98	16529	98	15701	101	15472	99	15184	98	12668	74	11424	66	493	3	144	1	74	0
Bhimber	15078	101	15984	99	15984	99	15272	102	14986	100	14815	99	15717	95	14916	90	1276	8	210	1	109	1
<b>AJ&amp;K</b>	<b>140751</b>	<b>98</b>	<b>152169</b>	<b>97</b>	<b>116953</b>	<b>75</b>	<b>146034</b>	<b>101</b>	<b>142824</b>	<b>99</b>	<b>140989</b>	<b>98</b>	<b>128537</b>	<b>81</b>	<b>115711</b>	<b>73</b>	<b>11388</b>	<b>7</b>	<b>1859</b>	<b>1</b>	<b>1034</b>	<b>4</b>

Source: Directorate of Health, Muzaffarabad

**DISTRICT WISE DISTRIBUTION OF ORAL REHYDRATION SALT (ORS) PACKETS IN AJ&K 2015**

Districts	Packet of Oral Rehydration Salt (ORS) Distributed
Muzaffarabad	98050
Hattian	10000
Neelum	27000
Bagh	21050
Haveli	6000
Poonch	12000
Sudhnoti	40580
Kotli	60910
Mirpur	20000
Bhimber	28600
<b>AJ&amp;K</b>	<b>324190</b>

Source: Directorate of Health, Muzaffarabad

**AJKRSP 2015**  
**STATISTICAL ANALYSIS OF MICRONUTRIENT DEFICIENCIES IN CHILDREN UNDER FIVE & WRA (Women with Reproductive Age):**

Indicator	Pakistan	AJ&K
<b>Micronutrient Deficiency Under Five</b>		
Stunting	43.7%	32%
Wasting	15%	18%
Anemia (Moderate to severe)	61.9%	46%
Iron deficiency Anemia	32.7%	26.7%
Vitamin A Deficiency	54%	44%
Zinc Deficiency	39.2%	47.2%
Vitamin D Deficiency	40%	35%
<b>Maternal Micronutrients Indicators</b>		
Anemia (Moderate to Severe) in non-pregnant women based in HB level 1	50.4%	41%
Anemia (Moderate to Severe) in pregnant women based in HB level 1	51%	43%
Vitamin A def. (Non-Pregnant)	42.1%	13.7%
Vitamin A def. (Pregnant)	46%	32.2%
Night blindness during last pregnancy	16%	17%
Vitamin D def. (Non-Pregnant)	66.8%	73.3%
Vitamin D def. (Pregnant)	68.9%	73.4%
Urinary iodine excretion in women (moderate to severe deficiency)	14%	35%
Use of iodized salt for cooking	39.8%	71.6%
Presence of Goiter	2.9%	9.8%
Worm infestation in the last six months	5.9%	13.9%
<b>Practice of Mothers for IYCF</b>		
Initiating breast feeding within one hour of birth	24.6%	12.4%
Initiating breast feeding within 1 to 12 hours of birth	27.6%	35.1%
Initiating breast feeding after 24 hours of birth	31.4%	26.5%
Honey as the first feed offered after birth	41%	43.2%
Exclusive breast feeding upto six months of age	15.2%	4.1%
Introducing semi solid food at 6-8 months of age	51.8%	35.7%
Knowledge about Iron rich food	24.8%	35%
Knowledge about Iodine rich food	42.8%	17%
<b>Socio Environmental Indicators</b>		
Household food insecurity	58%	55%
Household food insecurity (moderate to severe)	30%	26%
Formal education of mothers	41%	70%
Piped source of drinking water	50%	21%
Never treat water to make it safe for drinking	85%	93%

Unhygienic sanitation facility	22%	18%
Antenatal care from skilled provider	58.9%	79.6%
<b>Calories and Nutrition Intake Chart for Mothers</b>	<b>Required</b>	<b>Actual Intake</b>
Energy (Kcal)	2100	1597.8
Fats (gm)	30	28.8
Carbohydrate (gm)	130	292.6
Calcium	1000	437.2
Zinc (Mg)	10	8.1

Source: Azad Jammu & Kashmir Rural Support Program, Muzaffarabad



## EDUCATION 2015

Education has been a priority of the Govt. of the state of Azad Jammu & Kashmir as about 30% of its total recurring budget, besides, 7% of the total development budget is allocated to this sector. As a result of this substantial investment, AJ&K's literacy rate is 77%\* which is significantly higher than the national average of Pakistan. At present the gross enrollment rate at primary level is 115% for boys and 105% for girls (between the age of 5-9). District wise literacy rate is given below.

Name of District	Literacy Rate %
AJ&K	77
Muzaffarabad/Hattian	72
Neelum	54
Bagh/Haveli	74
Poonch	81
Sudhnoti	79
Kotli	73
Mirpur	78
Bhimber	79

Sources: \*PSLM Survey 2014-15

## STAFF POSITIONS OF AJ&amp;K UNIVERSITY MUZAFFARABAD

Name of Faculties/Depts.	Staff Positions										Total
	Professor		Associate Professor		Assistant Professor		Lecturer		Research Associate		
	M	F	M	F	M	F	M	F	M	F	
Education	0	0	0	0	1	1	0	2	3	0	7
Economics	1	0	1	0	0	2	3	4	1	1	13
Zoology	0	0	1	0	3	1	1	2	1	3	12
Sociology	0	0	0	0	0	1	0	0	0	0	1
Health Science	0	0	1	0	0	0	2	0	0	0	3
MPH	0	0	0	0	1	0	1	0	0	0	2
English	2	0	0	0	4	1	1	3	1	0	12
CS & IT	1	0	0	0	6	1	4	6	1	0	19
Math	1	0	0	0	4	2	3	0	0	0	10
Physics	1	0	1	0	3	2	5	0	1	0	13
Software Engineering	0	0	0	0	0	0	3	0	2	0	5
Botany	3	0	0	0	4	3	0	2	0	0	12
Chemistry	1	0	2	0	6	1	4	2	0	0	16
Geology	4	0	1	0	8	1	6	2	1	0	23
Kashmir Studies	0	0	0	0	2	2	0	0	2	3	9
Statistics	0	0	0	0	2	0	1	2	1	2	8
Biotechnology	1	0	0	0	2	0	1	1	0	0	5
Law	0	0	0	0	1	0	2	0	0	0	3
Art & Design	0	0	0	1	0	1	0	4	3	0	9
Business Administration	0	0	0	0	1	1	3	2	2	0	9
Electrical Eng.	0	0	0	0	1	0	3	0	1	0	5
<b>Total</b>	<b>15</b>	<b>0</b>	<b>7</b>	<b>1</b>	<b>49</b>	<b>20</b>	<b>43</b>	<b>32</b>	<b>20</b>	<b>9</b>	<b>196</b>

Source: AJ&amp;K University, Muzaffarabad

## AJ&amp;K UNIVERSITY MUZAFFARABAD ENROLLMENT 2015

Department	B.A/B.Sc		M.A/M.Sc.		M.Phil/M.S		Ph.D		Total		G. Total
	M	F	M	F	M	F	M	F	M	F	
<b>Chellah Campus</b>											
Statistics	9	33	19	43	0	11	0	0	28	87	115
Mathematics	77	62	58	54	11	11	5	1	151	128	279
Chemistry	107	22	89	18	22	54	8	5	226	99	325
Physics	84	56	52	48	24	19	10	2	170	125	295
Zoology	18	109	22	87	6	31	3	1	49	228	277
Biotechnology	0	0	0	0	6	17	2	5	8	22	30
Kashmir Std.	0	0	16	30	14	4	0	0	30	34	64
Urdu	0	0	9	33	0	0	0	0	9	33	42
Islamiat	0	0	3	6	0	0	0	0	3	6	9
Electrical Eng.	69	9	0	0	0	0	0	0	69	9	78
<b>Sub-Total</b>	<b>364</b>	<b>291</b>	<b>268</b>	<b>319</b>	<b>83</b>	<b>147</b>	<b>28</b>	<b>14</b>	<b>743</b>	<b>771</b>	<b>1514</b>
<b>City Campus</b>											
Art & Design	33	65	0	0	0	0	0	0	33	65	98
Education	54	277	0	0	22	18	0	0	76	295	371
Law	305	38	0	0	8	4	0	0	313	42	355
Economics	50	30	36	53	14	19	2	5	102	107	209
English	42	111	46	58	16	21	11	5	115	195	310
Sociology	42	53	23	59	0	0	0	0	65	112	177
Botany	14	65	36	114	9	46	5	11	64	236	300
CS & IT	173	80	63	47	25	30	9	3	270	160	430
Software Eng.	121	30	0	0	0	0	0	0	121	30	151
Business Adm.	78	38	79	34	0	0	0	0	157	72	229
Psychology	7	39	2	53	0	0	0	0	9	92	101
Geology	849	5	0	0	88	1	10	1	947	7	954
Institute of Medical Tech.	272	237	0	0	0	0	0	0	272	237	509
Department of Public Health	0	0	0	0	273	234	0	0	273	234	507
<b>Sub-Total</b>	<b>2040</b>	<b>1068</b>	<b>285</b>	<b>418</b>	<b>455</b>	<b>373</b>	<b>37</b>	<b>25</b>	<b>2817</b>	<b>1884</b>	<b>4701</b>
<b>Neelum Campus</b>											
Geology	31	0	0	0	0	0	0	0	31	0	31
CS & IT	44	14	0	0	0	0	0	0	44	14	58
<b>Sub-Total</b>	<b>75</b>	<b>14</b>	<b>0</b>	<b>0</b>	<b>0</b>	<b>0</b>	<b>0</b>	<b>0</b>	<b>75</b>	<b>14</b>	<b>89</b>
<b>Total Students Strength</b>	<b>2479</b>	<b>1373</b>	<b>553</b>	<b>737</b>	<b>538</b>	<b>520</b>	<b>65</b>	<b>39</b>	<b>3635</b>	<b>2669</b>	<b>6304</b>

Source: AJ&amp;K University, Muzaffarabad.

**UNIVERSITY OF MANAGEMENT SCIENCES & INFORMATION TECHNOLOGY KOTLI (A.K)**

Name of Faculties	Professor		Associate Professor		Assistant Professor		Lecturer		Research Associate		Non-Teaching Staff	Total
	M	F	M	F	M	F	M	F	M	F		
FASK	01	-	01	-	06	-	14	08	07	03	15	55
Commerce	-	-	-	-	01	-	04	-	01	-	04	10
Social Science & Humanities	-	-	01	-	02	-	01	01	03	01	05	14
Science	-	-	-	-	05	-	03	-	04	02	03	17
<b>Total</b>	<b>01</b>	<b>-</b>	<b>02</b>	<b>-</b>	<b>14</b>	<b>-</b>	<b>22</b>	<b>09</b>	<b>15</b>	<b>06</b>	<b>27</b>	<b>96</b>

Source:- University of Management Science &amp; IT, Kotli.

**UNIVERSITY OF MANAGEMENT SCIENCES & INFORMATION TECHNOLOGY KOTLI ENROLLMENT 2015**

Department	Ph.D		MPhil MS/LLM		MSc/M.A MBA/MS(ITM)		B.Sc(Hon.) BCS/SE/BBA/BS		Total		Grand Total
Business Adm.	-	-	-	-	92	17	184	39	<b>276</b>	<b>56</b>	<b>332</b>
CS&IT	-	-	16	12	-	-	385	75	<b>401</b>	<b>87</b>	<b>488</b>
Commerce	-	-	-	-	69	22	90	39	<b>159</b>	<b>61</b>	<b>220</b>
Banking & Finance	-	-	-	-	-	-	26	09	<b>26</b>	<b>09</b>	<b>35</b>
English	-	-	-	-	5	29	14	23	<b>19</b>	<b>52</b>	<b>71</b>
Public Administration	9	4	18	13	43	13	30	07	<b>100</b>	<b>37</b>	<b>137</b>
Law	-	-	-	-	36	-	-	16	<b>36</b>	<b>-</b>	<b>36</b>
Mathematics	-	-	-	-	21	27	26	36	<b>47</b>	<b>63</b>	<b>110</b>
Economics	-	-	2	8	33	53	22	46	<b>57</b>	<b>107</b>	<b>164</b>
Biotechnology	-	-	-	-	-	-	14	23	<b>14</b>	<b>23</b>	<b>37</b>
Botany	-	-	-	-	-	-	2	18	<b>2</b>	<b>18</b>	<b>20</b>
Physics	-	-	-	-	-	-	19	9	<b>19</b>	<b>9</b>	<b>28</b>
Zoology	-	-	-	-	-	-	7	11	<b>7</b>	<b>11</b>	<b>18</b>
Chemistry	-	-	-	-	-	-	5	24	<b>5</b>	<b>24</b>	<b>29</b>
<b>Total</b>	<b>9</b>	<b>4</b>	<b>36</b>	<b>33</b>	<b>299</b>	<b>161</b>	<b>824</b>	<b>359</b>	<b>1168</b>	<b>557</b>	<b>1725</b>

Source:- University of Management Science &amp; IT, Kotli.

**STAFF POSITIONS OF POONCH UNIVERSITY RAWALAKOT 2015**

Name of Faculty	Professor		Associate Professor		Assistant Professor		Lecturer		Lab Eng. /Research Associate		Non-Teaching Staff		Total		G. Total
	M	F	M	F	M	F	M	F	M	F	M	F	M	F	
Arts	2	-	4	-	-	-	6	4	1	1	4	-	17	5	22
Engineering & Technology	1	-	-	-	-	-	3	-	1	-	5	-	10	-	10
Agriculture	12	-	3	-	7	3	9	3	4	1	41	-	76	7	83
Basic & Applied Sciences	1	-	2	-	2	3	6	12	1	-	17	2	29	17	46
Medical & Health Sciences	1	-	-	-	3	3	6	2	2	-	3	1	15	5	20
Veterinary & Animal Sciences	2	-	1	-	-	-	20	1	-	-	14	2	37	3	40
General Administration	-	-	-	-	-	-	-	-	-	-	107	-	107	-	107
<b>Total</b>	<b>19</b>	<b>-</b>	<b>10</b>	<b>-</b>	<b>12</b>	<b>9</b>	<b>50</b>	<b>22</b>	<b>9</b>	<b>2</b>	<b>191</b>	<b>5</b>	<b>291</b>	<b>37</b>	<b>328</b>

Source:- Poonch University, Rawalakot

### POONCH UNIVERSITY RAWALAKOT ENROLLMENT 2015

Department	Ph.D		MS/M. Phil/LLM		M.SC/MA/MBA		BSC.(Hons.)		G. Total		
	M	F	M	F	M	F	M	F	M	F	M
Chemistry	-	-	24	20	71	150	37	80	<b>132</b>	<b>250</b>	<b>382</b>
Zoology	-	-	32	13	41	70	20	60	<b>93</b>	<b>143</b>	<b>236</b>
Mathematics	-	-	35	10	155	50	29	44	<b>209</b>	<b>104</b>	<b>313</b>
Physics	-	-	15	30	44	70	30	52	<b>28</b>	<b>152</b>	<b>180</b>
Botany	-	-	3	17	30	54	12	9	<b>45</b>	<b>40</b>	<b>85</b>
Geology	-	-	-	-	0	0	76	73	<b>76</b>	<b>73</b>	<b>149</b>
CS&IT	-	-	-	-	97	0	140	165	<b>237</b>	<b>165</b>	<b>402</b>
Agriculture	40	20	30	10		0	324	45	<b>394</b>	<b>75</b>	<b>469</b>
Veterinary	-	-	-	-		0	161	70	<b>165</b>	<b>70</b>	<b>235</b>
Eng. & Tech.	-	-	-	-		0	145	0	<b>146</b>	<b>0</b>	<b>146</b>
Pharmacy	-	-	-	-		0	97	115	<b>91</b>	<b>115</b>	<b>206</b>
EMS	-	-	4	-		0	70	45	<b>74</b>	<b>45</b>	<b>119</b>
Management	-	-	-	-	99	20	107	60	<b>206</b>	<b>50</b>	<b>256</b>
Commerce	-	-	-	-	68	32	0	0	<b>63</b>	<b>32</b>	<b>95</b>
Economics	-	-	-	-	58	34	7	2	<b>55</b>	<b>36</b>	<b>91</b>
English	-	-	-	-	91	45	58	0	<b>149</b>	<b>45</b>	<b>194</b>
Sociology	-	-	-	-	27	20	0	0	<b>27</b>	<b>20</b>	<b>47</b>
Psychology	-	-	-	-	53	35	5	4	<b>58</b>	<b>19</b>	<b>77</b>
Islamiat	-	-	-	-	40	10	0	0	<b>40</b>	<b>10</b>	<b>50</b>
<b>Grand Total</b>	<b>40</b>	<b>20</b>	<b>143</b>	<b>100</b>	<b>874</b>	<b>590</b>	<b>1318</b>	<b>824</b>	<b>2288</b>	<b>1444</b>	<b>3732</b>

Source:- Poonch University, Rawalakot.

**STAFF POSITIONS OF MIRPUR UNIVERSITY OF SCIENCE AND TECHNOLOGY (MUST)**

Name of Faculties	Professor		Associate Professor		Assistant Professor		Lecturer		Research Associate		Non Teaching Staff		G. Total
	M	F	M	F	M	F	M	F	M	F	M	F	
Faculty of Engineering	03	-	01	-	07	-	20	07	30	07	29	.0.001	105
Faculty of Sciences	04	01	01	01	20	05	14	23	09	13	-	-	91
Faculty of Arts	-	-	02	01	11	07	11	10	07	21	13	10	93
<b>Total</b>	<b>07</b>	<b>01</b>	<b>04</b>	<b>02</b>	<b>38</b>	<b>12</b>	<b>45</b>	<b>40</b>	<b>46</b>	<b>41</b>	<b>42</b>	<b>11</b>	<b>289</b>

Source:-Mirpur University of Science and Technology (MUST), Mirpur.

**MIRPUR UNIVERSITY OF SCIENCE AND TECHNOLOGY ENROLLMENT (MUST) 2015**

Departments	Number of Students										G. Total
	Ph.D		M.Phil/ M.S/LLM		M.A/M.Sc./MBA/ MS(ITM) MED		B.Sc.(H on)/ BCS/SE/BBA/ BS		Total		
	M	F	M	F	M	F	M	F	M	F	
Mechanical Engineering	-	-	20	01	-	-	337	05	357	06	<b>363</b>
Computer Sys. Engg.	-	-	10	18	-	-	217	53	227	71	<b>298</b>
Software Engineering	-	-	20	01	-	-	41	09	61	10	<b>71</b>
Civil Engineering	-	-	15	-	-	-	77	03	92	03	<b>95</b>
Electrical Engineering	-	-	43	08	-	-	286	40	329	48	<b>377</b>
Power Engineering	-	-	-	-	-	-	176	12	176	12	<b>188</b>
Electrical Technology	-	-	04	03	-	-	05	-	09	03	<b>12</b>
Bio Technology	07	06	08	20	-	-	21	129	36	155	<b>191</b>
Botany	03	02	14	21	13	83	07	57	37	163	<b>200</b>
CS & IT	-	-	08	04	16	44	222	130	246	178	<b>424</b>
Mathematics	01	02	05	23	36	57	51	73	93	155	<b>248</b>
Chemistry	02	05	06	27	17	84	-	-	25	116	<b>141</b>
Physics	06	02	13	17	37	56	-	-	56	75	<b>131</b>
Zoology	-	-	07	29	14	138	-	-	21	167	<b>188</b>
Economics	-	-	-	-	-	-	01	10	01	10	<b>11</b>
English	-	-	-	-	15	63	-	-	15	63	<b>78</b>
Home Economics	-	-	-	-	-	-	-	76	-	76	<b>76</b>
Education	-	-	-	-	-	17	-	-	-	17	<b>17</b>
Law	-	-	-	-	-	-	150	19	150	19	<b>169</b>
Islamic Studies	-	-	29	16	04	35	-	-	33	51	<b>84</b>
DBMS	-	-	25	05	136	43	275	59	436	107	<b>543</b>
<b>Total</b>	<b>19</b>	<b>17</b>	<b>227</b>	<b>193</b>	<b>288</b>	<b>620</b>	<b>1866</b>	<b>675</b>	<b>2400</b>	<b>1505</b>	<b>3905</b>

Source:-Mirpur University of Science and Technology (MUST), Mirpur



**STAFF POSITIONS OF WOMEN UNIVERSITY BAGH**

Departments	Professor		Associate Professor		Assistant Professor		Lecturer		Research Associate		Non Teaching Staff		Total		G. Total
	M	F	M	F	M	F	M	F	M	F	M	F	M	F	
Chemistry	1	-	1	-	3	1	1	4	-	-	-	-	6	5	11
IT	-	-	-	-	-	-	1	3	1	-	1	-	3	3	6
English	-	-	2	-	-	-	1	4	2	-	-	1	5	5	10
Education	-	-	-	-	-	-	-	5	-	-	-	-	-	5	5
Physics	-	-	-	-	3	-	2	1	-	-	-	-	5	1	6
Bio Tech.	-	-	-	-	1	1	-	5	-	-	-	1	1	7	8
Botany	-	-	-	-	1	-	1	2	-	-	-	1	2	3	5
Zoology	-	-	-	-	2	-	-	4	-	-	-	-	2	4	6
Physical Education	-	-	-	-	-	-	-	-	-	3	-	-	-	3	3
Mathematics	-	-	-	-	-	1	2	4	-	-	-	1	2	6	8
Economics	-	-	-	-	-	2	-	4	-	-	-	-	-	6	6
Business Administration	-	-	-	-	-	-	3	-	-	-	-	-	3	-	3
<b>Total</b>	<b>1</b>	<b>-</b>	<b>3</b>	<b>-</b>	<b>10</b>	<b>5</b>	<b>11</b>	<b>36</b>	<b>3</b>	<b>3</b>	<b>1</b>	<b>4</b>	<b>29</b>	<b>48</b>	<b>77</b>

Source:- Women University, Bagh

**WOMEN UNIVERSITY BAGH ENROLLMENT 2015**

Departments	Number of Students										G. Total
	B.S.(Hon)		M.A/M.Sc.		M.Phil		Ph.D		Total		
	M	F	M	F	M	F	M	F	M	F	
English	-	68	-	134	-	41	-	-	-	-	<b>243</b>
IT	-	79	-	15	-	0	-	-	-	-	<b>94</b>
Math	-	35	-	65	-	29	-	-	-	-	<b>129</b>
Physical Education	-	0	-	36	-	0	-	-	-	-	<b>36</b>
Zoology	-	57	-	79	-	25	-	-	-	-	<b>161</b>
Botany	-	08	-	36	-	16	-	-	-	-	<b>60</b>
Bio-Tech.	-	35	-	11	-	25	-	-	-	-	<b>71</b>
Physics	-	29	-	34	-	19	-	-	-	-	<b>82</b>
Education	-	15	-	66	-	28	-	-	-	-	<b>109</b>
Chemistry	-	45	-	98	-	38	-	-	-	-	<b>181</b>
Economics	-	25	-	86	-	32	-	-	-	-	<b>143</b>
Business Administration	-	15	-	0	-	0	-	-	-	-	<b>15</b>
<b>Total</b>	-	<b>411</b>	-	<b>660</b>	-	<b>253</b>	-	-	-	-	<b>1324</b>

Source:-Women University, Bagh

**AJ&K MEDICAL COLLEGE MUZAFFARABAD ENROLLMENT 2015**

1 <sup>st</sup> year		2 <sup>nd</sup> year		3 <sup>rd</sup> Year		4 <sup>th</sup> Year		5 <sup>th</sup> year		Total		G.Total
Male	Female	Male	Female	Male	Female	Male	Female	Male	Female	Male	Female	
29	59	32	66	29	70	29	73	28	66	147	334	481

**Faculty of AJ&K Medical College Muzaffarabad**

Name of Faculties/Dep.	Staff Position										Total
	Professor		Associate Professor		Assistant Professor		Senior Lecturer, Senior Registrar, Demonstrators/Lecturers & RMO		Non Teaching Staff		
	M	F	M	F	M	F	M	F	M	F	
Anatomy	1	-	-	-	-	1	2	7	10	1	22
Physiology	1	-	1	-	-	1	3	4	3	-	13
Biochemistry	1	-	-	-	1	-	1	3	3	-	9
Pathology	3	-	-	-	2	1	5	6	5	1	23
Pharmacology	1	-	-	-	1	-	1	4	3	-	10
Forensic Med.	1	-	-	-	1	-	-	4	2	-	8
Community Med.	1	-	-	-	2	2	1	3	2	-	11
Ophthalmology	-	-	-	1	2	-	-	-	-	-	3
ENT	-	-	-	-	2	1	-	-	-	-	3
Gynae/Obs	-	-	-	-	-	6	-	5	-	-	11
Pediatrics	1	-	-	-	4	-	-	1	-	-	6
Surgery & Allied	2	-	3	-	8	3	-	1	-	-	17
Medicine & Allied	-	-	2	-	19	7	-	2	-	-	30
Administration	-	-	-	-	-	-	-	-	76	10	86
<b>Total</b>	<b>12</b>	<b>-</b>	<b>6</b>	<b>1</b>	<b>42</b>	<b>22</b>	<b>13</b>	<b>40</b>	<b>104</b>	<b>12</b>	<b>252</b>

Source:-AJ&amp;K Medical College, Muzaffarabad

**POONCH MEDICAL COLLEGE RAWALAKOT ENROLLMENT 2015**

*1 <sup>st</sup> year		2 <sup>nd</sup> year		3 <sup>rd</sup> Year		4 <sup>th</sup> Year		Total		G.Total
Male	Female	Male	Female	Male	Female	Male	Female	Male	Female	
35	50	22	52	49	70	10	43	116	215	331

**Faculty of Poonch Medical College Rawalakot**

Name of Faculties/Dep.	Staff Position										Total
	Professor		Associate Professor		Assistant Professor		Demonstrators /Lecturers /Reg.		Non Teaching Staff		
	M	F	M	F	M	F	M	F	M	F	
Admin Dep.	-	-	-	-	-	-	-	-	59	7	66
Anatomy	1	-	1	-	2	0	4	1	6	1	15
Physiology	0	1	-	1	1	2	6	2	6	0	19
Biochemistry	1	0	-	1	1	0	1	3	6	0	13
Pathology	2	1	-	0	4	0	2	3	3	0	15
Pharmacology	1	0		0	1	0	3	3	2	0	10
Forensic Med.	0	0	1	0	0	0	3	2	2	0	8
Community med.	1	0	1	1	1	0	6	1	1	0	12
Medicine	1	0	1	1	5	1	1	0	0	0	10
Surgery	2	0	3	0	2	1	1	0	0	0	9
ENT	1	0	1	0	0	0	0	0	0	0	2
EYE	0	0	-	0	2	0	0	0	1	0	4
Orthopedic	0	0	-	0	2	0	1	0	0	0	3
Peads	0	0	-	0	2	0	0	0	0	0	1
Gynae/Obs	0	1	-	0	0	3	0	0	4	0	8
Radiology	0	0	-	0	3	0	0	0	0	0	3
Eurology	0	0	-	0	1	0	0	0	0	0	1
Psychiatry	0	0	-	1	0	0	1	0	0	0	1
<b>Total</b>	<b>10</b>	<b>3</b>	<b>8</b>	<b>5</b>	<b>27</b>	<b>7</b>	<b>29</b>	<b>15</b>	<b>90</b>	<b>8</b>	<b>200</b>

Source:-Poonch Medical College, Rawalakot



**MBBS MEDICAL COLLEGE MIRPUR ENROLLMENT 2015**

1 <sup>st</sup> year		2 <sup>nd</sup> year		3 <sup>rd</sup> Year		4 <sup>th</sup> Year		Total		G.Total
Male	Female	Male	Female	Male	Female	Male	Female	Male	Female	
32	71	37	67	30	65	36	59	135	262	397

**Faculty of MBBS Medical College Mirpur**

Name of Faculties/Dep.	Staff Position										Total
	Professor		Associate Professor		Assistant Professor		Demonstrator/Lecturers /Reg.		Non Teaching Staff		
	M	F	M	F	M	F	M	F	M	F	
Anatomy	1	-	2	-	-	-	3	3	6	-	15
Biochemistry	1	-	1	-	1	-	-	4	6	-	13
Community Med.	2	-	1	-	1	1	3	-	4	2	14
Forensic Med.	1	-	1	-	1	-	1	3	5	-	12
Medical Education	-	-	-	-	1	-	1	-	4	-	06
Pathology	1	1	4	-	-	-	1	3	4	-	14
Pharmacology	1	-	-	-	1	1	1	4	5	-	13
Physiology	1	-	1	-	1	-	3	2	4	-	12
DHQ	2	1	3	-	5	5	-	-	-	-	16
NCH	2	1	-	-	-	4	3	3	-	-	13
Admin	-	-	-	-	-	-	-	-	133	21	154
Accounts	-	-	-	-	-	-	-	-	11	-	11
<b>Total</b>	<b>12</b>	<b>03</b>	<b>13</b>	<b>-</b>	<b>11</b>	<b>11</b>	<b>16</b>	<b>22</b>	<b>182</b>	<b>23</b>	<b>293</b>

Source:-MBBS Medical College, Mirpur

**MOHI-UD-DIN ISLAMIC MEDICAL COLLEGE MIPUR ENROLLMENT 2015**

1 <sup>st</sup> year		2 <sup>nd</sup> year		3 <sup>rd</sup> Year		4 <sup>th</sup> Year		5 <sup>th</sup> year		Total		G.Total
Male	Female	Male	Female	Male	Female	Male	Female	Male	Female	Male	Female	
45	56	58	52	34	59	40	62	41	63	218	292	510

**a) Faculty of Mohi-ud-din Islamic Medical College Mirpur**

Name of Faculties/Dep.	Staff Position										Total
	Professor		Associate Professor		Assistant Professor		Senior Lecturer, Senior Registrar, Demonstrators /Lecturers & RMO		Non Teaching Staff		
	M	F	M	F	M	F	M	F	M	F	
Anatomy	1	1	-	-	-	-	2	2	6	-	12
Physiology	-	-	1	-	1	-	2	2	3	1	10
Biochemistry	-	-	-	-	-	-	1	4	4	-	9
Pharmacology	1	-	1	-	-	-	1	5	6	1	15
Pathology	1	-	1	-	-	1	2	3	5	-	13
Community Med.	1	-	1	-	1	-	-	3	2	-	8
Forensic Med.	1	-	-	-	-	-	2	1	2	-	6
Medical Education	-	-	1	-	-	-	-	-	3	-	4
Medicine	1	-	1	-	5	1	3	1	-	-	12
Surgery	3	-	1	-	4	-	2	-	-	-	10
Gynae/Obs	-	1	-	1	-	2	-	4	-	-	8
Padiatrics	-	-	1	-	-	-	1	3	-	-	5
ENT	1	-	1	-	-	-	2	-	-	-	4
Ophthalmology	1	-	-	-	1	-	2	-	-	-	4
Anesthesia	1	-	-	-	-	-	-	2	-	-	3
Radiology	1	-	-	-	-	1	-	1	-	-	3
Urology	-	-	1	-	-	-	-	-	-	-	1
Miscellaneous	-	-	-	-	-	-	3	8	230	86	327
<b>Total</b>	<b>13</b>	<b>2</b>	<b>10</b>	<b>1</b>	<b>12</b>	<b>5</b>	<b>23</b>	<b>39</b>	<b>261</b>	<b>88</b>	<b>454</b>

Source:-Mohi-ud-din Islamic Medical College, Mirpur





**DISTRICT AND LEVEL WISE NUMBER OF GOVERNMENT INSTITUTIONS 2015**

<b>Districts</b>	<b>Intermediate Colleges</b>	<b>Model Science Colleges</b>	<b>Degree Colleges</b>	<b>Post Graduate</b>	<b>College of Education</b>	<b>Total</b>
MZD.	06	01	06	02	-	<b>15</b>
Hattian	05	-	04	-	-	<b>09</b>
Neelum	06	-	02	-	-	<b>08</b>
Bagh	13	01	04	02	01	<b>21</b>
Haveli	01	-	02	-	-	<b>03</b>
Poonch	13	-	07	02	-	<b>22</b>
Sudhnuti	10	-	02	02	-	<b>14</b>
Kotli	18	01	12	02	-	<b>33</b>
Mirpur	12	01	09	01	01	<b>24</b>
Bhimber	10	-	07	01	-	<b>18</b>
<b>Total</b>	<b>94</b>	<b>04</b>	<b>55</b>	<b>12</b>	<b>02</b>	<b>167</b>

Source:- Directorate of Education Colleges, Muzaffarabad



**DETAIL OF TEACHING STAFF IN COLLEGES 2015**

<b>Designation</b>	<b>Male</b>	<b>Female</b>	<b>Total</b>
Professor	95	84	<b>179</b>
Associate Professor	173	47	<b>220</b>
Assistant Professor	222	270	<b>492</b>
Lecturer	710	581	<b>1291</b>
Lecturer Physical Education	57	53	<b>110</b>
Librarian	55	53	<b>108</b>
Commerce Instructor	45	1	<b>46</b>
Computer Instructor	60	53	<b>113</b>
Senior Teachers	317	174	<b>491</b>
Senior Technical Teachers	25	3	<b>28</b>
<b>Total</b>	<b>1759</b>	<b>1319</b>	<b>3078</b>

Source:- Directorate of Education Colleges, Muzaffarabad

**DETAIL OF TEACHING/NON-TEACHING STAFF IN EDUCATION INSTITUTIONS**

<b>Sub-Sector</b>	<b>Gazetted</b>	<b>Non-Gazetted</b>	<b>Total</b>
Secretariat Education Colleges	14	14	<b>28</b>
Directorate Education Colleges	27	42	<b>69</b>
Divisional Directorate Colleges MZD	05	09	<b>14</b>
Divisional Directorate Colleges Mirpur	05	09	<b>14</b>
Directorate of Education Planning	12	21	<b>33</b>
Engineering Cell	08	40	<b>48</b>
Khurshid Library Muzaffarabad.	04	24	<b>28</b>
<b>Total</b>	<b>75</b>	<b>159</b>	<b>234</b>

Source:- Directorate of Education Colleges, Muzaffarabad

**LEVEL WISE STUDENTS ENROLLMENT IN COLLEGES 2015**

District	Gender	<sup>th</sup> 9	<sup>th</sup> 10	<sup>st</sup> 1 year	<sup>nd</sup> 2 Year	<sup>rd</sup> 3 Year	<sup>th</sup> 4 Year	M.A 1	M.A 2	Bs 4 Year	Total
MZD	Female	67	52	762	626	612	392	13	28	0	2552
	Male	299	250	1891	1887	305	435	40	75	101	5283
Neelum	Female	125	136	73	86	9	21	0	0	0	450
	Male	462	375	321	279	14	9	0	0	0	1460
Hatian	Female	195	144	229	125	88	94	0	0	0	875
	Male	123	168	410	245	79	36	0	0	0	1061
Bagh	Female	536	489	785	583	328	295	0	40	0	3056
	Male	128	109	554	493	239	177	0	116	90	1906
Haveli	Female	0	0	56	37	20	20	0	0	0	133
	Male	49	35	84	29	10	06	0	0	0	213
Poonch	Female	289	295	808	723	505	513	24	19	20	3196
	Male	84	78	717	565	285	335	26	31	0	2121
Sudhnoti	Female	173	136	553	456	358	310	8	0	0	1994
	Male	252	243	598	358	210	174	12	9	0	1856
Kotli	Female	601	383	1208	932	643	431	17	22	0	4237
	Male	504	396	1694	1210	790	644	0	16	0	5254
Mirpur	Female	219	200	1330	1203	1037	670	0	0	0	4659
	Male	27	27	1197	679	1059	525	86	145	252	3997
Bhimber	Female	349	302	814	740	476	425	0	0	0	3106
	Male	357	280	814	513	196	137	0	7	0	2304
<b>Total</b>		<b>4839</b>	<b>4098</b>	<b>14898</b>	<b>11769</b>	<b>7263</b>	<b>5649</b>	<b>226</b>	<b>508</b>	<b>463</b>	<b>49713</b>

Source:- Directorate of Education Colleges, Muzaffarabad

**DISTRICT AND GENDER-WISE DETAIL OF COLLEGES IN AJ&K  
(PUBLIC SECTOR)**

District	Post Graduate			Degree			Intermediate			Total
	Male	Female	Co-Education	Male	Female	Co-Education	Male	Female	Co-Education	
MZD.	-	01	01	02	04	-	05	01	01	15
Hattian	-	-	-	03	01	-	02	03	-	09
Neelum	-	-	-	01	01	-	05	01	-	08
Bagh	01	02	-	01	02	01	04	09	01	21
Haveli	-	-	-	01	01	-	01	0	-	03
Poonch	01	01	-	03	04	-	04	09	-	22
Sudhnuti	01	01	-	01	02	-	06	03	-	14
Kotli	01	-	-	06	07	-	08	10	01	33
Mirpur	01	-	01	04	07	01	03	07	-	24
Bhimber	-	-	-	03	05	-	07	03	-	18
<b>Sub Total</b>	<b>05</b>	<b>05</b>	<b>02</b>	<b>25</b>	<b>34</b>	<b>02</b>	<b>45</b>	<b>46</b>	<b>03</b>	<b>167</b>
<b>G. Total</b>	<b>12</b>			<b>61</b>			<b>94</b>			

Source:- Directorate of Education Colleges, Muzaffarabad

## Schools 2015

District	Gender	Mosque	Primary	Middle	High	Higher Secondary	Industrial School	Literacy Centre	Village Workshop	Total
MZD	Female	4	283	48	53	5	-	-	-	393
	Male	142	212	82	58	5	-	-	-	499
Neelum	Female	-	76	9	11	1	-	-	-	97
	Male	74	67	25	16	-	-	-	-	182
Hatian	Female	-	142	22	12	1	-	-	-	159
	Male	63	92	40	25	-	-	-	-	220
Bagh	Female	12	172	90	37	6	-	-	-	317
	Male	100	63	70	47	4	-	-	-	284
Haveli	Female	1	74	20	12	-	-	-	-	107
	Male	27	89	21	17	1	-	-	-	155
Poonch	Female	-	307	81	56	5	-	-	-	449
	Male	142	112	68	50	5	-	-	-	377
Sudhnoti	Female	-	176	42	27	1	-	-	-	246
	Male	136	43	45	24	-	-	-	-	248
Kotli	Female	2	329	77	53	5	-	-	-	466
	Male	191	236	79	59	5	-	-	-	570
Mirpur	Female	11	162	43	47	1	-	-	-	264
	Male	60	205	44	44	3	-	-	-	356
Bhimber	Female	-	168	50	38	5	-	-	-	261
	Male	184	62	55	32	1	-	-	-	334
<b>Total</b>		<b>1149</b>	<b>3052</b>	<b>1011</b>	<b>718</b>	<b>54</b>	<b>-</b>	<b>-</b>	<b>-</b>	<b>5984</b>

Source: EMIS Education Department, Muzaffarabad.

## STUDENT AGE/CLASS WISE ENROLLMENT FOR THE YEAR 2015

District	Gender	Primary (05-09Year)						Middle (10-12 Year)				High (13-14)Year			Higher Secondary		
		1 Class	2 Class	3 Class	4 Class	5 Class	Total	6 Class	7 Class	8 Class	Total	9 Class	10 Class	Total	Class-11	Class-12	Total
MZD.	Male	4015	3672	3418	3148	3485	17738	2724	2645	2717	8086	2206	1893	4099	49	68	117
	Female	3945	3733	3379	3151	2853	17061	2388	2367	2311	7066	1722	1621	3343	257	342	599
Neelum	Male	1768	1690	1586	1554	1539	8137	1048	1084	1191	3323	918	480	1398	0	7	7
	Female	1394	1357	1268	1150	1047	6216	580	587	615	1782	387	215	602	0	4	4
Hattian	Male	2098	2019	1705	1731	1793	9346	1525	1562	1532	4619	959	748	1707	0	0	0
	Female	1989	1827	1659	1461	1548	8484	1113	1037	868	3018	364	375	739	109	163	272
Bagh	Male	2339	2261	2084	2029	2101	10814	1746	1790	1898	5434	1487	1457	2944	101	94	194
	Female	2600	2594	2570	2363	2406	12533	2069	1983	2116	6168	1197	1286	2483	131	105	236
Haveli	Male	1171	1224	1229	1182	1087	5893	990	885	855	2730	681	586	1267	14	26	40
	Female	1051	1048	1004	990	966	5059	693	626	564	1883	408	346	754	0	10	10
Poonch	Male	2440	2432	2311	2151	2027	11361	1703	1773	1724	5200	1412	1222	2634	116	35	151
	Female	2677	2649	2473	2444	2773	12579	1874	1977	1945	5796	1288	1031	2319	90	94	184
Sudhnoti	Male	1530	1585	1514	1625	1720	7974	1198	1349	1487	4034	825	815	1640	11	0	11
	Female	1715	1751	1713	1699	1855	8733	1353	1269	1339	3961	808	890	1698	20	25	45
Kotli	Male	4239	4139	4315	4516	4404	21613	3205	3131	3113	9449	2497	1831	4328	102	92	194
	Female	4406	4649	4682	4543	4440	22720	3097	3075	2882	9054	1894	1575	3469	152	149	301
Mirpur	Male	1960	1957	2029	1993	1714	9653	1715	1689	1577	4981	1202	1187	2389	0	0	0
	Female	2140	2160	2247	2381	2019	10947	2437	2249	2143	6829	1534	1422	2956	68	92	160
Bhimber	Male	1997	2195	2280	2304	2189	10965	1809	1766	1893	5468	1166	943	2109	7	25	32
	Female	2373	2362	2429	2400	2134	11698	1776	1668	1598	5042	996	862	1858	155	145	300
<b>Total</b>	<b>Male</b>	<b>23557</b>	<b>23174</b>	<b>22471</b>	<b>22233</b>	<b>22059</b>	<b>113494</b>	<b>17663</b>	<b>17674</b>	<b>17987</b>	<b>53324</b>	<b>13353</b>	<b>11162</b>	<b>24515</b>	<b>400</b>	<b>347</b>	<b>746</b>
	<b>Female</b>	<b>24290</b>	<b>24130</b>	<b>23424</b>	<b>22582</b>	<b>21604</b>	<b>116030</b>	<b>17380</b>	<b>16838</b>	<b>16381</b>	<b>50599</b>	<b>10598</b>	<b>9623</b>	<b>20221</b>	<b>982</b>	<b>1129</b>	<b>2112</b>
<b>G.Total</b>		<b>47847</b>	<b>47304</b>	<b>45895</b>	<b>44815</b>	<b>43663</b>	<b>229524</b>	<b>35043</b>	<b>34512</b>	<b>34368</b>	<b>103923</b>	<b>23951</b>	<b>20785</b>	<b>44736</b>	<b>1382</b>	<b>1476</b>	<b>2858</b>

Source: EMIS Education Department, Muzaffarabad.

**GENDER-WISE NUMBER OF GOVT. SCHOOLS TEACHERS OF AJ&K (2014-15)**

<b>Teaching Posts</b>	<b>Male</b>	<b>Female</b>	<b>Total</b>
Primary Teachers	7482	7587	<b>15069</b>
Junior Teachers	4271	3067	<b>7338</b>
Senior Teachers	2610	2092	<b>4702</b>
<b>Total</b>	<b>14363</b>	<b>12746</b>	<b>27109</b>

Source: EMIS Education Department, Muzaffarabad.



**STUDENT CLASS WISE ENROLLMENT FOR THE YEAR (2014-15)**

Dist rict	Gend er	Ur- admitt ed	Kachi	Class- 1	Class- 2	Class- 3	Class-4	Class- 5	Class- 6	Class- 7	Class- 8	Class- 9	Class- 10	Class- 11	Class- 12	Total
MZD	Male	2878	5622	4015	3672	3418	3148	3485	2724	2645	2717	2206	1893	49	68	<b>38540</b>
	Female	2817	5461	3945	3733	3379	3151	2853	2388	2367	2311	1722	1621	257	342	<b>36347</b>
Neelum	Male	1742	1781	1768	1690	1586	1554	1539	1048	1084	1191	918	480	-	7	<b>16388</b>
	Female	1476	1614	1394	1357	1268	1150	1047	580	587	615	387	215	-	4	<b>11694</b>
Hattian	Male	1976	2909	2098	2019	1705	1731	1793	1525	1562	1532	959	748	-	-	<b>20057</b>
	Female	2111	2868	1989	1827	1659	1461	1548	1113	1037	868	364	375	109	163	<b>17492</b>
Bagh	Male	2225	3151	2339	2261	2084	2029	2101	1746	1790	1898	1487	1457	101	94	<b>24763</b>
	Female	2092	3410	2600	2594	2570	2363	2406	2069	1983	2116	1197	1286	131	105	<b>26922</b>
Haveli	Male	770	1687	1171	1224	1229	1182	1087	990	885	855	681	586	14	26	<b>12487</b>
	Female	541	1546	1051	1048	1004	990	966	693	626	564	408	346	-	10	<b>9793</b>
Poonch	Male	2505	3405	2440	2432	2311	2151	2027	1703	1773	1724	1412	1222	116	35	<b>25256</b>
	Female	2450	3720	2677	2649	2473	2444	2336	1874	1977	1945	1288	1031	90	94	<b>27048</b>
Sudhnoti	Male	2297	1912	1530	1585	1514	1625	1720	1198	1349	1487	825	815	11	-	<b>17868</b>
	Female	2008	2003	1715	1751	1713	1699	1855	1353	1269	1339	808	890	20	25	<b>18448</b>
Kotli	Male	4410	7199	4239	4139	4315	4516	4404	3205	3131	3113	2497	1831	102	92	<b>47193</b>
	Female	4149	7196	4406	4649	4682	4543	4440	3097	3075	2882	1894	1575	152	149	<b>46889</b>
Mirpur	Male	1030	2830	1960	1957	2029	1993	1714	1715	1699	1577	1202	1187	-	-	<b>20883</b>
	Female	686	2503	2140	2160	2247	2381	2019	2437	2249	2143	1534	1422	68	92	<b>24081</b>
Bhimber	Male	881	3512	1997	2195	2280	2304	2189	1809	1766	1893	1166	943	7	25	<b>22967</b>
	Female	803	3728	2373	2362	2429	2400	2134	1776	1668	1598	996	862	155	145	<b>23429</b>
<b>Total</b>	<b>Male</b>	<b>20714</b>	<b>34008</b>	<b>23557</b>	<b>23174</b>	<b>22471</b>	<b>22233</b>	<b>22059</b>	<b>17663</b>	<b>17684</b>	<b>17987</b>	<b>13353</b>	<b>11162</b>	<b>400</b>	<b>347</b>	<b>246402</b>
	<b>Female</b>	<b>19133</b>	<b>34049</b>	<b>24290</b>	<b>24130</b>	<b>23424</b>	<b>22582</b>	<b>21604</b>	<b>17380</b>	<b>16838</b>	<b>16381</b>	<b>10598</b>	<b>9623</b>	<b>982</b>	<b>1129</b>	<b>242143</b>
<b>G.Total</b>		<b>39847</b>	<b>68157</b>	<b>47847</b>	<b>47304</b>	<b>45895</b>	<b>44815</b>	<b>43663</b>	<b>35043</b>	<b>34512</b>	<b>34368</b>	<b>23951</b>	<b>20785</b>	<b>1382</b>	<b>1476</b>	<b>489045</b>

Source: EMIS Education Department, Muzaffarabad.

**SOCIAL WELFARE & WOMEN DEVELOPMENT DEPARTMENT 2015**  
**DISTRICTS WISE INSTITUTIONS**

Name of Institution	Muzaffabad	Hatijan	Neelum	Bagh	Haveli	Poonch	Sudhnoti	Kotli	Bhimber	Mirpur	Total
Dar-ul-Falah	01	-	-	01	-	01	-	01	-	01	<b>05</b>
Rural House Hold Education Centers	01	-	-	01	-	01	-	01	-	01	<b>05</b>
Kashana Centre	01	-	-	01	-	01	01	01	01	01	<b>07</b>
Shelter Homes	01	-	-	-	-	-	-	01	-	-	<b>02</b>
Women Development Centers	04	01	-	02	01	05	-	05	01	02	<b>21</b>
Employment & Development Centers	01	01	03	01	01	02	01	02	01	01	<b>14</b>
Social Welfare Complexes	01	-	-	-	-	-	-	-	-	-	<b>01</b>
Shaheed Benazir Women Development Centre	01	-	-	-	-	-	-	-	-	01	<b>02</b>
National Special Education Centre	01	-	-	-	-	-	-	-	-	-	<b>01</b>
Drug Addicts Rehabilitation Center	01	-	-	-	-	-	-	-	-	-	<b>01</b>
Establishment of Social Welfare Centre	-	-	01	-	01	-	-	-	-	-	<b>02</b>
	<b>13</b>	<b>02</b>	<b>04</b>	<b>06</b>	<b>03</b>	<b>10</b>	<b>02</b>	<b>11</b>	<b>03</b>	<b>07</b>	<b>61</b>

Source:-Social Welfare Department, Muzaffarabad

**DETAIL OF INFORMATION TECHNOLOGY OF AJK FOR THE YEAR 2015**

<b>Intervention</b>	<b>Accumulative achievements 2015</b>
Establishment of IT Training Centers in AJ&K	Completed/Closed
Training of Govt.Employees/Youth	Completed/Closed
Establishment of Computer Labs in Degree Colleges AJ&K	51
Establishment of Computer Labs in Inter Colleges of AJ&K	38
Establishment of Computer Labs in High/Higher Secondary Schools	460
Launching of websites	Launched/Closed
Automation of AJ&K PSC	100% Completed
Automation of AIMS Hospital, Muzaffarabad	100% Completed
Computerization of Land Record of AJ&K	Initiated at 3 tehsils (Hattian, Dhirkot & Dadyal) as pilot project and till date all the record of almost 0.400 million land owners of the concerned tehsils has been scanned & indexed. Accordingly, the 70% data entry has also been completed and the land owners of the same can view/print their record online through <a href="http://www.AJ&amp;Kzameen.gok.pk">www.AJ&amp;Kzameen.gok.pk</a>
Automation of Judicial System & Connectivity of Supreme Court Offices at Muzaffarabad Rawalakot & Mirpur.	All the Judicial work flows of AJ&K Court have been automated. Cause list of all operational branches has been made available to all concerned through <a href="http://www.AJ&amp;Ksupremecourt.gok.pk">www.AJ&amp;Ksupremecourt.gok.pk</a>

Source: - Information Technology Board, Muzaffarabad

**POLICE 2015****TERRITORIAL HIERARCHY OF POLICE UNITS IN AZAD JAMMU & KASHMIR**

<b>Division</b>	<b>District</b>	<b>Sub Divisions</b>	<b>Police Stations</b>	<b>Police Posts</b>	<b>Check Posts</b>
<b>Muzaffarabad</b>	Muzaffarabad	2	8	4	2
	Neelum	2	3	3	1
	Hattian	3	4	-	-
<b>Poonch</b>	Rawalakot	4	5	6	5
	Haveli	3	2	1	1
	Sudhnoti	4	4	3	-
	Bagh	3	2	2	4
<b>Mirpur</b>	Mirpur	2	8	2	5
	Kotli	6	6	5	3
	Bhimber	3	4	2	13
<b>Total</b>		<b>32</b>	<b>46</b>	<b>28</b>	<b>34</b>

Source: -Central Police Office, Muzaffarabad.

**TERRITORIAL HIERARCHY OF POLICE UNITS IN AZAD KASHMIR**

Divisions	Distt.	Sub Division	Police Station	Police Posts	Check Posts	
Muzaffarabad	Muzaffarabad	Muzaffarabad	City Muzaffarabad			
			Sadar MZD	Bararkot	Lohar Gali & Shaheed Gali	
			Civil Sectarat	Rara		
			Garhi Dupatta	Komikot		
			Danna			
			Qulian	Kohala		
	Neelum	Pattika (Nasirabad)	Kohori			
			Panjgran			
	Hattian	Athmaqam	Athmuqam	Jora Bandi	Chalhana	
			Lawat	Kail & Halmat		
	Hattian	Sharda	Sharda			
			Hattian	Chinari		
			Hattian Bala			
			Chikaar	Chikaar		
Poonch	Bagh	Bagh	City Bagh		Shujahabad, Noman Pura, Sudhan Galli, Coprah	
			Dhirkot	Dhirkot	Arja, Sahlian	Gujar Kohala, Khappader, Minhasa, Hans Chowkie
	Haveli	Haveli	Hari Ghel			
			Kahuta		Mehmood Gali	
			Bhedi	Khurshidabad		
	Rawalakot	Rawalakot	Rawalakot	City Rawalakot	Baldia Rawalakot & Banjosa	Gohain Nala & Dar Gala Bazar
				Datoot	Gandala	Arja Cross & Thala Bazar
				Thorar	Dhilkot	Kalyari
			Abbaspur	Abbaspur		
			Hajira	Hajira	Sehra & donga Ghawbir	
	Sudhnoti	Mong	Pallandri	Pallandri	Azad Pattan & Sahlian	
			Trarkhal	Trarkhal		
			Baloch	Baloch	Bassari	
			Mong	Mong		

	Kotli	Kotli	City Kotli	Tatta Pani, Sarsawa & Qamroti	
			Khuratta		
		Sahansa	Sahansa	Holar	
		Fetehtpur (Nakiyal)	Nakiyal		
		Charhoi	Charhoi	Kaladhab	
		Khoirata	Khoirata		Garai
		Dolia Jatan	Naar		
	Mirpur		City Mirpur		Bankhurman
			New City Mirpur		
			Thothal		Khaliqabad
			Mangla		Chek Post Mangla, Chittar Pari, Industrial Area
			Islamgarh		
			Afzal Pur		
		Dudyal	Dudyal	Dhangali	Palak Pull, Sorri Gali
			Chaksawari		
	Bhimber	Bhimber	City, Ali Baig	Dheri Watan	Dheri Wattan, Bhring, Mughal Pura, Pindi Chujah Cross
		Samani	Chowkie Samani		Jhandi, Choun Tarah, Pir Gali
		Barnala	Barnala	Singri	Kadhala, Hazari, Kalyaan Bani, Nandpur, Dallah, Ali Baig, Kangrak

Source:-Central Police Office, Muzaffarabad.

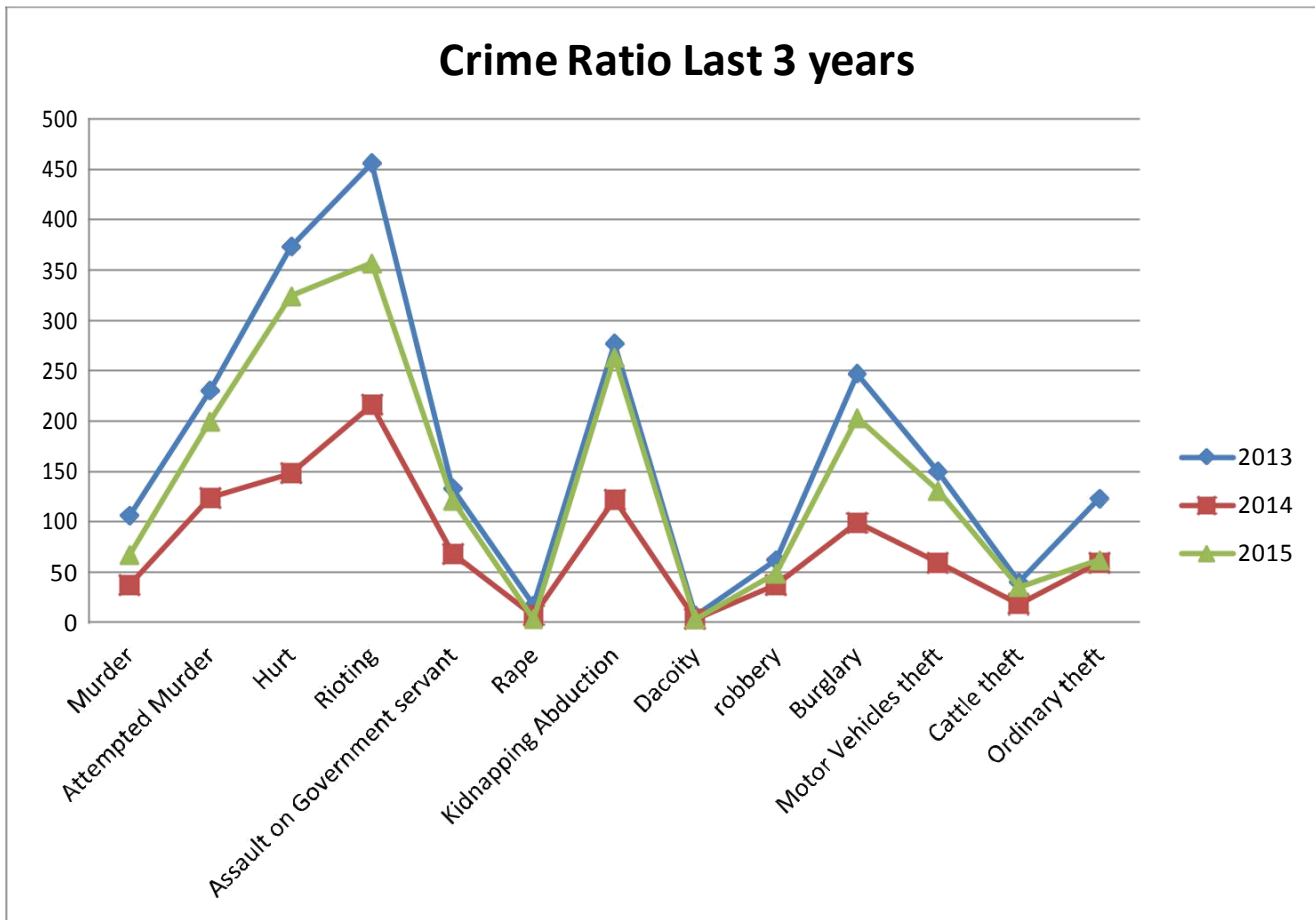
**DISTRICT WISE POLICE CRIME REPORT 2015**

Districts	All Reported	Murder	Attempted Murder	Hurt	Rioting	Assault on Government Servants	Rape	Kidnapping/Abduction	Dacoity	Robbery	Burglary	Motor Vehicles Theft	Cattle Theft	Ordinary Thefts	Misc.
Muzaffarabad	976	10	26	21	76	23	2	79		6	55	30	10	18	620
Neelum	109	1	6	6	13	3		10			7			6	57
Hattian	216	1	5	12	33	5		18			14	2	2	3	121
Poonch	726	12	19	62	42	16		48	1	4	14	19	4	6	479
Sudhnoti	369	4	22	25	20	4		20		6	14	10	1	3	240
Haveli	113	1	10	4	15	5		6		2	6	1			63
Bagh	311	2	9	10	17	11		23	1	2	18	6	3	6	203
Mirpur	1193	11	39	40	36	16	1	22	1	14	50	47	9	8	899
Kotli	804	11	37	46	69	28		24		6	13	11		11	548
Bhimber	546	14	27	98	36	10		13		9	12	5	6	1	315
<b>Total</b>	<b>5363</b>	<b>67</b>	<b>200</b>	<b>324</b>	<b>357</b>	<b>121</b>	<b>3</b>	<b>263</b>	<b>3</b>	<b>49</b>	<b>203</b>	<b>131</b>	<b>35</b>	<b>62</b>	<b>3545</b>

Source:-Central Police Office, Muzaffarabad.

**LAST 3 YEARS CRIME REPORT**

Year	Murder	Murder	Hurt	Rioting	Government servant	Rape	Dacoity	Robbery	Burglary	Motor Vehicle theft	Cattle theft	Ordinary theft	
2013	106	230	373	456	133	17	277	07	62	247	150	40	123
2014	37	124	148	216	68	7	122	3	37	99	59	18	59
2015	67	200	324	357	121	3	263	3	49	203	131	35	62

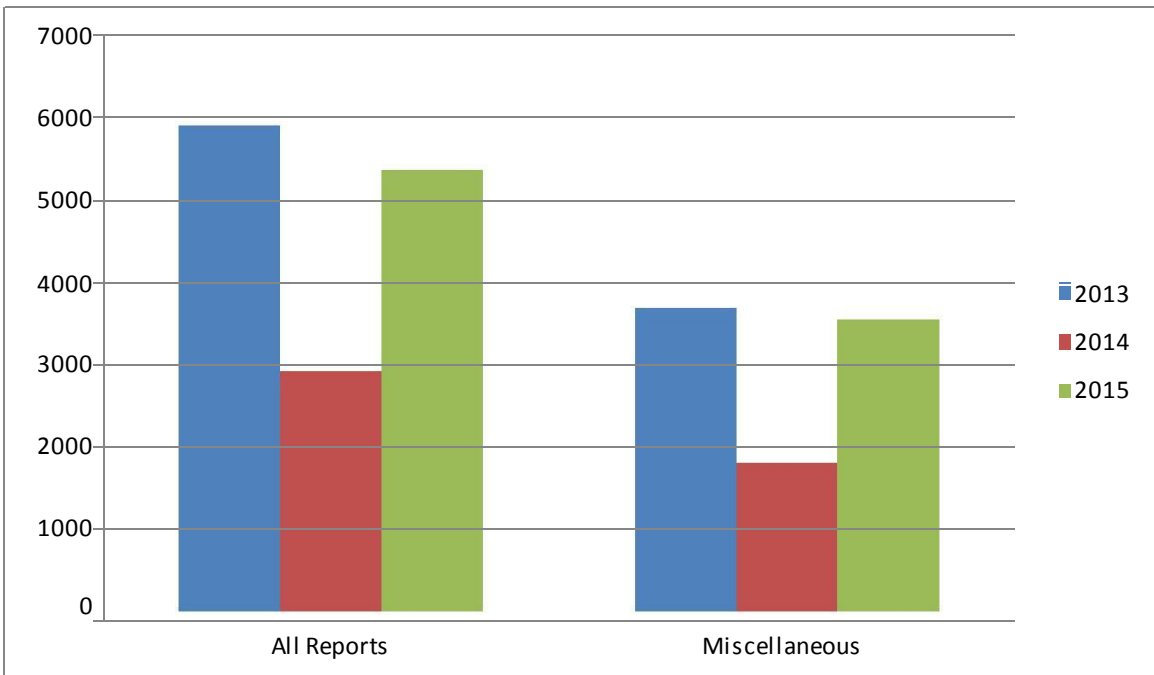


Source: Police Department Muzaffarabad



**YEAR WISE SUMMARY OF CRIME REPORT**

<b>Year</b>	<b>All Reports</b>	<b>Miscellaneous</b>
2013	5903	3682
2014	2913	1803
2015	5363	3545



Source: Police Department Muzaffarabad

**TRANSPORT 2015****Motor Vehicles Registered by Type (July 2014 to June 2015)**

Category	Districts								Total
	MZD/Hattian	Neelum	Bagh/ Haveli	Poonch	Sudhnoti	Kotli	Mirpur	Bhimber	
Buses	1	-	-	1	-	-	11	-	<b>13</b>
Trucks	-	-	-	3	-	-	86	-	<b>89</b>
Motorcars	86	-	3	5	-	5	825	-	<b>924</b>
Taxi/Cab	-	-	-	-	-	-	-	-	-
Motor Cycles/ Scooters	1876	114	52	130	75	2310	3264	135	<b>7958</b>
Rickshaws	433	1	-	-	5	-	405	-	<b>844</b>
Jeeps 4 × 4	37	25	12	10	1	16	62	-	<b>163</b>
Station wagon	7	-	6	2	-	-	5	-	<b>20</b>
Tractors	2	-	5	14	3	22	17	4	<b>67</b>
Delivery Van	20	-	3	1	-	2	-	2	<b>28</b>
Government Goods Vehicles	-	-	-	-	-	-	-	-	-
Oil Tankers /Water Tankers	-	-	-	-	-	-	-	-	-
Pickups	39	-	2	6	-	84	143	-	<b>274</b>
Gas Tankers	-	-	-	-	-	-	-	-	-
Ambulances	-	-	1	-	-	-	-	-	<b>1</b>
Cranes	-	-	-	-	-	-	-	-	-
Truck Trailers	-	-	-	-	-	-	-	-	-
Dumper Trucks	-	-	-	-	-	-	-	-	-
Mini Bus	2	-	1	1	-	-	51	-	<b>55</b>
Mini Trucks	20	1	4	1	-	1	6	-	<b>33</b>
<b>Total</b>	<b>2525</b>	<b>141</b>	<b>89</b>	<b>174</b>	<b>84</b>	<b>2440</b>	<b>4875</b>	<b>141</b>	<b>10469</b>

Source:- Income Tax Department, Mirpur

**TOTAL NO. OF REGISTERED VEHICLES UP TO JUNE 2015**

Category	Districts								Total
	MZD/Hattian	Neelum	Bagh/ Haveli	Poonch	Sudhnoti	Kotli	Mirpur	Bhimber	
Buses	176	4	36	10	45	90	144	117	<b>622</b>
Trucks	732	20	169	155	26	441	776	225	<b>2544</b>
Motorcars	1420	2	100	87	27	962	9918	362	<b>12878</b>
Taxi/Cab	-	-	171	3	13	504	-	2	<b>693</b>
Motor Cycles/ Scooters	7862	25	402	728	410	16309	37259	5168	<b>68163</b>
Rickshaws	457	-	-	-	3	1	2850	6	<b>3317</b>
Jeeps	1714	31	348	95	82	962	743	67	<b>4042</b>
Station wagon	368	6	99	31	26	291	29	8	<b>858</b>
Tractors	76	1	38	140	50	462	732	298	<b>1797</b>
Delivery Van	235	-	36	50	16	85	879	106	<b>1407</b>
Government Goods Vehicles	-	-	-	-	1	--	-	-	<b>01</b>
Oil Tankers /Water Tankers	-	-	2	2	-	2	-	2	<b>08</b>
Pickups	1621	-	116	153	75	810	2315	166	<b>5256</b>
Gas Tankers	-	-	-	-	-	-	-	-	-
Ambulances	-	-	10	4	4	5	-	10	<b>33</b>
Cranes	-	-	-	-	-	-	-	-	<b>0</b>
Truck Trailers	2	-	-	2	-	-	21	-	<b>25</b>
Dumper Trucks	-	-	-	4	-	-	-	-	<b>04</b>
Mini Bus	91	-	-	-	-	-	1047	-	<b>1138</b>
Mini Trucks	97	-	-	-	-	-	128	-	<b>225</b>
<b>Total</b>	<b>14851</b>	<b>289</b>	<b>1527</b>	<b>1464</b>	<b>778</b>	<b>20924</b>	<b>56841</b>	<b>1527</b>	<b>103011</b>

Source:- Income Tax Department, Mirpur

# **PHYSICAL INFRASTRUCTURE**



**ROADS & COMMUNICATION 2015**

Metalled Roads	8909 Km
Fair-Weather Roads	6958 Km
AJ&K Road Density	0.67 Per Sq.Km
Pakistan Road Density	0.33

District	(i) Metalled Roads (Km)					(ii) Fair-Weather Roads (Km)			G. Total (i+ii) KM
	PWD			LG&RD	Total	PWD	LG&RD	Total	
	Double lane Roads	Major Roads	Link Roads						
Muzaffarabad	109	193	254	125	<b>681</b>	54	701	<b>755</b>	<b>1436</b>
Neelum	0	161	836	9	<b>1006</b>	77	201	<b>278</b>	<b>1284</b>
Hattian	45	90	464	44	<b>643</b>	84	305	<b>389</b>	<b>1032</b>
Bagh	59	184	595	105	<b>943</b>	0	762	<b>762</b>	<b>1705</b>
Haveli	0	148	158	36	<b>342</b>	119	258	<b>377</b>	<b>719</b>
Poonch	143	314	632	118	<b>1207</b>	69	1148	<b>1217</b>	<b>2424</b>
Sudhnoti	42	226	425	65	<b>758</b>	0	428	<b>428</b>	<b>1186</b>
Kotli	4.2	396.2	1084.69	180	<b>1665.09</b>	0	1511	<b>1511</b>	<b>3176.09</b>
Mirpur	173	19	614	125	<b>931</b>	0	585	<b>585</b>	<b>1516</b>
Bhimber	0	152	474	107	<b>733</b>	39	617	<b>656</b>	<b>1389</b>
<b>Total</b>	<b>575.2</b>	<b>1883.2</b>	<b>5536.69</b>	<b>914</b>	<b>8909.09</b>	<b>442</b>	<b>6516</b>	<b>6958</b>	<b>15867.09</b>

Source:-LG&amp;RD and Public Works Department, Muzaffarabad

**Roads:**

Roads and air transport are the only mode of transportation in Azad Jammu and Kashmir. The present road length and its comparison with the position in 1947 are given below: -

**Road Length (Kms)**

<b>Roads</b>	<b>1947</b>	<b>2015</b>
Metalled	100	8909.09
Fair-weather	165	6958
<b>Total</b>	<b>265</b>	<b>15867.09</b>
Road Density (Km Per Sq.Km)	0.008	0.67

**Airports**

The Government of Azad Jammu and Kashmir in collaboration with the Civil Aviation Authority of Pakistan has constructed two small airports in Muzaffarabad and Rawalakot cities in order to provide easy and fast mode of travel (Flights presently suspended). About 1.5 million People belonging to AJ&K are living abroad, hence; there is a dire need for construction of international airports in AJ&K. Therefore, Mirpur airport will be constructed in collaboration with Civil Aviation Authority, GoP.

## POWER 2015

At present, the installed Grid capacity is 677.3MVA. About 25,861 km transmission lines have been extended to 1670 villages out of a total of 1771 villages and about 4.267 million population have been provided with electricity supply. The per capita electricity consumption is 353 KWH and within next two years 100% population of AJ&K is planned to be provided with power connections. The Government lays great emphasis on generating electricity in order to meet the growing domestic as well as industrial requirements. It has been planned to launch a comprehensive programme for construction of Hydro power stations AJ&K to exploit this vast potential.

### Electricity Connections

District	Number of Consumers				
	Domestic	Commercial	Industrial	Other	Total
Neelum	9201	733	2	68	10004
Muzaffarabad	67895	8979	142	1319	78335
Hattian	26129	1532	15	17	27693
Bagh	48445	3350	45	0	51840
Haveli	6987	443	1	0	7431
Poonch	68791	6409	96	116	75412
Sudhnoti	36004	2288	38	0	38330
Kotli	88976	12994	386	345	102701
Mirpur	84328	20641	651	74	105694
Bhimber	58700	6320	317	282	65619
<b>Total</b>	<b>495456</b>	<b>63689</b>	<b>1693</b>	<b>2221</b>	<b>563059</b>

Source: Directorate of Power Department, Muzaffarabad.



**DISTRICT WISE POWER FACILITIES 2015**

<b>Power Facilities</b>	<b>Neelum</b>	<b>Muzaffarabad</b>	<b>Hatthian</b>	<b>Bagh</b>	<b>Haveli</b>	<b>Poonch</b>	<b>Sudhnoti</b>	<b>Kotli</b>	<b>Mirpur</b>	<b>Bhimber</b>	<b>Total</b>
Small Hydral Station (Nos.)	6	-	3	2	-	1	-	-	-	-	<b>12</b>
Villages Electrified (Nos.)	81	387	155	107	91	119	62	229	231	208	<b>1670</b>
Kilometer of HT. Line (Km)	511	1141	522	1544	529	1234	664	1683	948	739	<b>9515</b>
Kilometer of LT. Line(Km)	757	2937	1143	1929	819	2558	1070	3094	1552	1416	<b>16975</b>
Grid Station(Nos.)	-	4	1	2	-	2	3	3	6	1	<b>22</b>
Transform/sub – Station (Nos.)	315	1425	448	1449	348	1551	735	3618	1740	1169	<b>12798</b>
Consumers (Nos.)	1004	78335	27693	51840	7431	75412	38330	102701	105694	65619	<b>563059</b>
Installed Grid Capacity (MVA)	-	73	13	40	-	74	40.3	112	273	52	<b>677.3</b>
Per Capita Electricity Delivered(KWH)	76	309	390	216	90	223	150	378	941	380	<b>353</b>
Population Served (Million)	0.183	0.638	0.239	0.415	0.163	0.590	0.317	0.814	0.473	0.435	<b>4.267</b>

Source: Directorate of Power Department, Muzaffarabad.



## HYDRO POWER GENERATION

Electricity facility was available to few villages of District Muzaffarabad & Mirpur up to 1973-74. Since then a phased program was planned to provide electricity to urban & rural population, which is being continued. Under this program, several projects have been implemented through which electricity distribution network has been expanded to 95% population of AJ&K. Up to December 2015, approximately 5,63,059 service connections have been provided under this program.

AJ&K has identified potential of hydro power generation of 8695.46 MW of electricity using its natural resources.

### Status of Hydro Power Projects in AJ&K

STATUS	Nos.	Capacity(MW)
Commissioned	<b>16</b>	<b>1135.870</b>
a. PDO	13	50.870
b. WAPDA	1	1000.000
c. AJ&KPPC/PPIB	2	85.000
Ongoing	<b>19</b>	<b>1372.55</b>
a. PDO (ADP:10, PSDP:1)	16	154.55
b. WAPDA	1	969.000
c. AJ&KPPC/PPIB	2	249.000
New Projects (AJ&K PDO) FY 2015-16 (3 AJ&K ADP Cap: 2.5 MW)	<b>3</b>	<b>2.5</b>
Upcoming Projects in Public Sector (19 Feasibility Completed Cap: 62.88 MW+ 4PC-I Cap:78.25 MW)	<b>23</b>	<b>141.13</b>
Projects Under Process in Private Sector ( 08 PPIB Cap:3912 MW + 223 AJ&KPPC Cap: 272.41)	<b>30</b>	<b>4184.41</b>
Raw Sites pre-feasibility under process by WAPDA (Dudhnial: 960 MW, Neelum II, III & IV : 899 MW)	<b>4</b>	<b>1859.000</b>
<b>TOTAL</b>	<b>95</b>	<b>8695.460</b>

Source: Power Development Organization, Muzaffarabad

**PROJECTS COMPLETED/ COMMISSIONED**

S.#	PROJECT SITE	CAPACITY (MW)	DISTRICT
<b>A. WAPDA</b>			
1	Mangla Power Station	1000.00	Mirpur
<b>B. Power Development Organization</b>			
i.	Jagran-I Power Station	30.400	Neelum
ii.	Kel Power Station	0.200	Neelum
iii.	Kundal Shahi Power Station	2.000	Neelum
iv.	Changan Power Station	0.050	Neelum
v.	Halmat Power Station	0.320	Neelum
vi.	Sharda Power Station	3.000	Neelum
vii.	Pattika Power Station	0.100	Muzaffarabad
viii.	Leepa Power Station	1.600	Hattian
ix.	Kathai Power Station	3.200	Hattian
x.	Sharian Power Station	3.200	Hattian
xi.	Qadirabad, Power Station	3.000	Bagh
xii.	Rehra Power Station	3.200	Bagh
xiii.	Ranger-I Power Station	0.600	Poonch
<b>Sub-Total (B)</b>		<b>50.87</b>	
<b>C. Private Power Cell (PPC)</b>			
1	New Bong Escape Power Station	84.000	Mirpur
<b>D. Private Power Investment Board (PPIB)</b>			
1.	Kharhi Power Station	1.000	Mirpur
<b>Grand Total (A+B+C+D)</b>		<b>1135.87</b>	

Source: Power Development Organization, Muzaffarabad

**PROJECT UNDER CONSTRUCTION**

<b>S#</b>	<b>PROJECT SITE</b>	<b>CAPACITY (MW)</b>	<b>DISTRICT</b>
<b>A. WAPDA</b>			
1	Neelum Jhelum Hydro Power Project	969.000	Muzaffarabad
<b>B. Power Development Organization</b>			
i.	Bhedi Doba Hydro Power Project	1.000	Neelum
ii.	Jagran-II Hydro Power Project	48.000	Neelum
iii.	Kel Hydro Power Project	0.750	Neelum
iv.	Dowarian Hydro Power Project	40.00	Neelum
v.	Nagdar Hydro Power Project	35.000	Neelum
vi.	Rehabilitation Up gradation Kel-I Hydro Power Project	0.500	Neelum
vii.	Up gradation of Pattika Hydro Power Project	0.500	Muzaffarabad
viii.	Jhing Hydro Power Project	14.400	Muzaffarabad
ix.	Kappa Banamula Hydro Power Project	4.000	Hattian
x.	Battar Hydro Power Project	4.800	Haveli
xi.	Hillan Hydro Power Project	0.600	Haveli
Xii	Ranger-II Hydro Power Project	0.450	Poonch
xiii.	Hajira Hydro Power Project	1.600	Ponch
xiv.	Guin Nullah Hydro Power Project	0.250	Sudhnoti
xv.	Dhannan Hydro Power Project	1.700	Kotli
xvi.	Glater Hydro Power Project	1.000	Kotli
<b>Sub-Total B</b>		<b>154.550</b>	
<b>C. PPC/PPIB</b>			
1	Patrind Hydro Power project	147.00	Muzaffarabad
2	Gulpur Hydro Power Project	102	Kotli
<b>Sub Total C</b>		<b>249.000</b>	
<b>Grand Total (A+B+C)</b>		<b>1372.55</b>	

Source: Power Development Organization, Muzaffarabad

**SPECIAL COMMUNICATIONS ORGANIZATION (SCO) - 2015**

SCO raised since 1976, is providing state-of-the-art, modern IT and Telecom facilities in the most difficult region of Azad Jammu & Kashmir. Current services include landline Telephone (PSTN), Mobile (GSM), Wireless Local Loop (WLL), Internet Broadband (DSL) and Digital Cross Connect (DXX). Despite competitive market, de-regulated telecomm environment and presence of all cellular giants in the area, SCO has been declared Significant Market Player (SMP) by the PTA during current year.

Vision of the SCO is stipulation of reliable, effective, innovative and up-to-date voice and data communication services to the people living in the most rugged / arduous terrain.

**District Wise Digital Exchanges**

S#	District	Exchanges	Capacity(Connection)
1	Muzaffarabad	7	8520
2	Hattian	7	4060
3	Neelum	11	7024
4	Bagh	13	4692
5	Haveli	3	2600
6	Poonch	18	10184
7	Sudhnoti	10	2614
8	Mirpur	16	32988
9	Kotli	22	30212
10	Bhimber	8	10104
	<b>Total</b>	<b>115</b>	<b>112998</b>

Source: SCO, Muzaffarabad

**Telecom Facilities in AJ&K**

Services	2015		
	Exchanges	Capacity (Connection)	Working Connection
PSTN	117	112998	45460
SCOM	95 x BTS	400k	209807
WLL	40 x BTS	25000	47023
DXX	23 x Nodes	344	20
DSL	47 x DSLAMs	7232	2103
OFC (Km)		1262	
Satellite Terminals		3	
MW Terminals		109	

Source: SCO, Muzaffarabad

**POSTAL FACILITIES - 2015**

<b>Districts</b>	<b>General Post Offices (GPOs)</b>	<b>Extra Departmental Branch Post Offices</b>	<b>Extra Departmental Sub Post Offices</b>	<b>Sub Post Offices</b>
Muzaffarabad	01	27	-	07
Neelum	-	12	01	03
Hattian	-	13	-	06
Sudhnoti	01	30	02	13
Poonch	01	44	02	24
Bagh	01	27	04	11
Haveli	-	13	-	02
Kotli	01	56	04	16
Mirpur	01	27	-	25
Bhimber	01	35	02	17
<b>Total</b>	<b>07</b>	<b>284</b>	<b>15</b>	<b>124</b>

Source: Office of the Dy. General Post Sector Head Quarter, AJ&amp;K, MZD





### PIPED WATER SUPPLY 2015

At the time of independence, availability of piped water supply was non-existent but significant progress has now been made in this regard. Presently 68% of the urban population and 53 % of rural population has been provided with a piped water supply through house connections and public stand posts. Out of 1771 villages, 1032 have been provided with water supply facility.

#### Local Govt. & Rural Development Piped Water Supply in Rural Areas

District wise	MZD	Neelum	Hattian	Bagh	Haveli	Poonch	Sudhnoti	Kotli	Mirpur	Bhimber	Total
Villages	415	88	167	140	91	122	61	234	246	207	<b>1771</b>
Rural population (in million)	0.621	0.172	0.227	0.341	0.136	0.516	0.270	0.746	0.408	0.400	<b>3.838</b>
Piped water facilities benefited population (in million)	0.405	0.075	0.125	0.192	0.095	0.355	0.125	0.425	0.280	0.255	<b>2.332</b>
Piped water facilities in %age	<b>57</b>	<b>38</b>	<b>48</b>	<b>50</b>	<b>62</b>	<b>61</b>	<b>41</b>	<b>50</b>	<b>60</b>	<b>56</b>	<b>53</b>

Source: Water Supply & Sanitation Baseline Survey, LG&RDD/WSP-World Bank

#### Rural Population Having Access to Different Drinking Water Sources

Drinking Water Source	Population (%age)
Directly from Spring/ Pitchers	45.00
HH Tap Connection	22.00
Stand post	14.00
Community Tank	6.00
Communal Motor Pumps	6.00
Communal Dug Wells	4.00
HH Water Tank	1.00
Water Harvesting Structures	1.00
Tanker/Donkey Tanker	1.00
<b>Total</b>	<b>100</b>

Source: Water Supply & Sanitation Baseline Survey, LG&RDD/WSP-World Bank

**REQUIREMENT OF WATER ON DAILY BASIS (RURAL POPULATION)**

Quantity of Water	Drinking	Laundry	Sanitation	Livestock Management	Dish washing	Others
Up to 10 Liters	38%	14%	16%	12%	29%	26%
11- 20 Liters	44%	35%	29%	17%	35%	18%
21 -40 Liters	15%	31%	31%	19%	24%	9%
41-50 Liters	2%	14%	17%	17%	8%	5%
50 and more Liters	1%	6%	7%	18%	4%	11%
NA	0	0%	0%	17%	0%	31%
<b>Total</b>	<b>100%</b>	<b>100%</b>	<b>100%</b>	<b>100%</b>	<b>100%</b>	<b>100%</b>

Source: Water Supply &amp; Sanitation Baseline Survey, LG&amp;RDD/WSP-World Bank

**Water Storage Facilities at Household Level**

Water Storage Facilities	Population (%)
No Storage Vessels	2.58
RCC Tank on Roof	4.17
RCC Underground Tank	2.73
Plastic Tank	20.37
Containers (Plastic/Metal Cans)	6.64
Drums	28.37
Matkas/Pitchers	32.95
Pound	0.56
Others: 310 (0.65%)	0.98
<b>Total</b>	<b>0.65</b>

Source: Water Supply &amp; Sanitation Baseline Survey, LG&amp;RDD/WSP-World Bank

**Rural Population Having Access to Various Sanitation Facilities at Household Level**

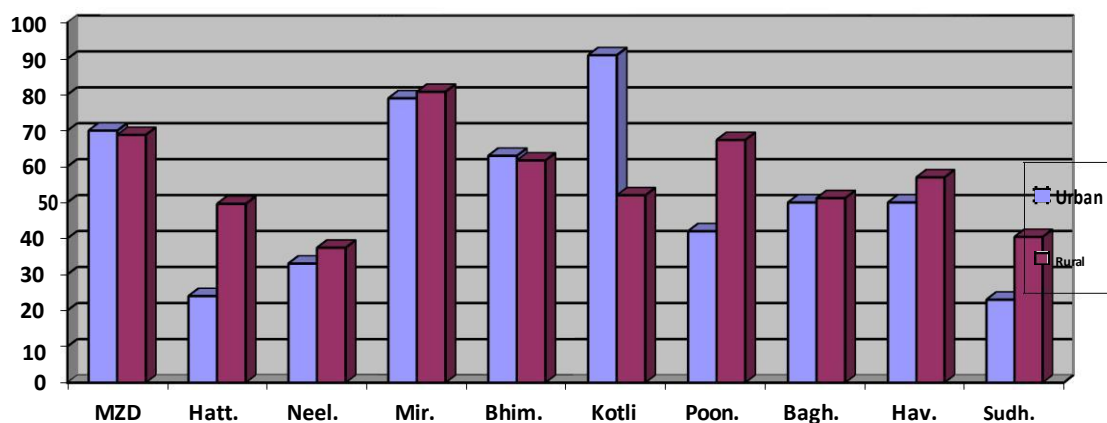
Sanitation Facility	Population (%)
Pipe Sewerage Connected Latrines	8
Flash or Pour Flash Latrines	20
Latrines With Septic Tanks	32
Ventilated Pit Latrines	4
Pit Latrine with Slab	11
Pit Without Slab/ Open Pit	4
Others	16
No Toilet	5
<b>Total</b>	<b>100</b>

Source: Water Supply &amp; Sanitation Baseline Survey, LG&amp;RDD/WSP-World Bank

**PHYSICAL PLANNING & HOUSING- PIPED WATER SUPPLY IN URBAN AREAS 2015**

District wise	Ma bad	Neel um	Hat tian	Ba gh	Ha veli	Poo nch	Sud hnot i	Ko tli	Mi rp ur	Bi mbe r	To tal
Urban population(in million)	0.137	0.009	0.017	0.026	0.004	0.008	0.022	0.071	0.179	0.022	0.568
Houses with in Municipal limits (No.)	24714	2750	4785	6785	1142	13427	4600	10620	26760	4102	93003
Houses with Piped water facility (No.)	15939	460	656	1894	250	4750	700	10426	24705	2562	57599
Benefited population (in million)	0.092	0.003	0.004	0.013	0.002	0.032	0.005	0.076	0.166	0.017	0.376
Piped water facilities in % age	70	33	24	50	50	42	23	98	92	62	68

Source:-LG&amp;RD and PPH Department, Muzaffarabad





# **PRODUCTIVE SECTORS**



## AGRICULTURE 2015

Area under cultivation is around 1,940,82 hectares, which is almost 13% of the total Geographical area out of which 92% of the cultivable area is rain-fed. About 87% households have very small land holdings between one to two acres. Major crops are Maize, Wheat & Rice whereas minor crops are Grams, Pulses (Red Kidney Beans), Vegetables and Oil-seeds. Major fruits produced in AJ&K are Apple, Pears, Apricot and Walnuts. Agriculture and livestock income ranges between 30-40% of household earnings.

The remaining share comes from other sources including employment, businesses and remittances received by the families of AJ&K living abroad. Reduced agriculture productivity has adversely affected the traditional lifestyle and per capita income of the rural households.

### Agriculture in AJ&K 2015

<b>Land Holdings Area in Hectares &amp; Acres</b>		
	<b>Hectares</b>	<b>Acres</b>
<b>1. Total Farm Area</b>	<b>637368</b>	<b>1574936</b>
Farm Area per Family	1.749	4.323
Farm Area Per Capita	0.216	0.534
<b>2. Area Under Cultivation</b>	<b>194082</b>	<b>479576</b>
Cultivated Area Per Family	0.515	1.273
Cultivated Area Per Capita	0.064	0.157
<b>3. Annual Cropped Area</b>	<b>238735</b>	<b>589913</b>
Non-irrigated Area	181979	449671
Irrigated Area	12102	29905
Area Under Maize Cultivation	99408	245638
Area Under wheat //	80706	199425
Area Under Rice //	2824	6979
Area Under Jawar //	48	118
Area Under Vegetables //	3493	8631
Area Under Fruits //	13092	32350

Sources: Agriculture Department, Muzaffarabad.

### DISTRICT WISE FARM AREA 2015

District	Unit	Total Farm Area	Farm Area per Family	Farm Area per Capita
Muzaffarabad	Hectares	85201	1.435	0.205
	Acres	210533	3.545	0.506
Hattian	Hectares	31955	1.218	0.179
	Acres	86598	3.009	0.443
Neelum	Hectares	22238	1.216	0.094
	Acres	54950	3.005	0.231
Bagh	Hectares	49665	0.928	0.143
	Acres	122723	2.292	0.353
Haveli	Hectares	36052	3.304	0.248
	Acres	89084	8.163	0.614
Poonch	Hectares	58007	1.512	0.210
	Acres	143335	3.736	0.519
Sudhnoti	Hectares	41915	1.953	0.219
	Acres	103572	4.826	0.542
Kotli	Hectares	97368	1.326	0.149
	Acres	240596	3.277	0.368
Mirpur	Hectares	85230	3.749	0.475
	Acres	210603	9.264	1.173
Bhimber	Hectares	126646	3.82	0.423
	Acres	312942	8.357	1.045
<b>Total</b>	<b>Hectares</b>	<b>637368</b>	<b>1.749</b>	<b>0.216</b>
	<b>Acres</b>	<b>1574936</b>	<b>4.323</b>	<b>0.534</b>

Sources: Agriculture Department, Muzaffarabad.



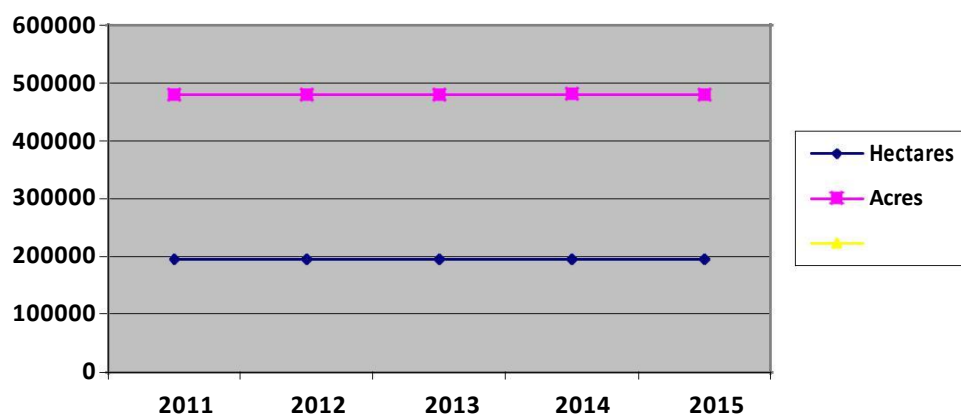
**AREA UNDER CULTIVATION 2015**

<b>District</b>	<b>Unit</b>	<b>Area under Cultivation</b>	<b>Cultivated Area per Family</b>	<b>Cultivated Area per Capita</b>
Muzaffarabad	Hectares	28344	0.460	0.066
	Acres	70039	1.136	0.162
Hattian	Hectares	12075	0.411	0.060
	Acres	29839	1.015	0.149
Neelum	Hectares	7705	0.410	0.032
	Acres	19040	1.013	0.079
Bagh	Hectares	14821	0.277	0.043
	Acres	36623	0.683	0.105
Haveli	Hectares	5455	0.499	0.038
	Acres	13479	1.233	0.093
Poonch	Hectares	20741	0.509	0.071
	Acres	15251	1.257	0.175
Sudhnoti	Hectares	13330	0.619	0.070
	Acres	32938	1.530	0.172
Kotli	Hectares	33804	0.454	0.051
	Acres	83529	1.121	0.126
Mirpur	Hectares	21951	0.827	0.101
	Acres	54240	2.043	0.249
Bhimber	Hectares	35855	0.922	0.115
	Acres	88598	2.278	0.285
<b>Total</b>	<b>Hectares</b>	<b>194082</b>	<b>0.515</b>	<b>0.064</b>
	<b>Acres</b>	<b>479576</b>	<b>1.273</b>	<b>0.157</b>

Sources: Agriculture Department, Muzaffarabad.

**LAST 5 YEARS AREA UNDER CULTIVATION**

Years		2011	2012	2013	2014	2015
Area Under Cultivation	Hectares	193984	194193	194191	194260	194082
	Acres	479354	479852	479845	480018	479576



Source: Agriculture Department Muzaffarabad.

## ANNUAL CROPPED AREA AZAD JAMMU &amp; KASHMIR 2015

District	Unit	Annual Crop in Hectares	Non- Irrigated Area	Irrigated Area	Area Under Maize/Cultivars	Area Under Wheat	Area Under Rice	Area Under Jawar	Area Under Millet (Ba- jra)	Area Under Gram	Area Under Vegetables
Muzaffarabad	Hectares	30905	25754	2591	24328	5268	529	0	0	0	708
	Acres	76367	63637	6402	60115	13018	1308	0	0	0	1749
Hattian	Hectares	11578	11096	979	9438	1390	329	0	0	0	360
	Acres	28609	27419	2420	23322	3434	813	0	0	0	890
Neelum	Hectares	6017	3139	4567	5113	159	41	0	0	0	464
	Acres	14868	7756	11284	12634	394	100	0	0	0	1146
Bagh	Hectares	18946	14650	171	8561	4789	3	0	0	0	655
	Acres	46816	36200	423	21154	11834	7	0	0	0	1619
Haveli	Hectares	7149	5452	3	4321	503	0	0	3	0	299
	Acres	17664	13472	7	10676	1243	0	0	8	0	739
Poonch	Hectares	21297	19895	846	10687	4965	138	0	0	0	491
	Acres	52624	49160	2091	26408	12269	340	0	0	0	1214
Sudhnoti	Hectares	16995	13180	150	7070	5550	0	0	0	0	53
	Acres	41994	32568	370	17469	13714	0	0	0	0	130
Kotli	Hectares	52319	32987	817	23373	23414	63	0	110	0	211
	Acres	129281	81510	2019	57755	57856	155	0	271	0	522
Mirpur	Hectares	22595	21019	932	1222	10696	652	48	6184	0	94
	Acres	55832	51938	2303	3019	26431	1610	118	15281	0	233
Bhimber	Hectares	50934	34808	1047	5296	23971	1071	0	18147	0	158
	Acres	125858	86012	2587	13086	59234	2645	0	44841	0	389
<b>Total</b>	<b>Hectares</b>	<b>238735</b>	<b>181979</b>	<b>12102</b>	<b>99408</b>	<b>80706</b>	<b>2824</b>	<b>48</b>	<b>24444</b>	<b>0</b>	<b>3493</b>
	<b>Acres</b>	<b>589913</b>	<b>449671</b>	<b>29905</b>	<b>245638</b>	<b>199425</b>	<b>6979</b>	<b>118</b>	<b>60402</b>	<b>0</b>	<b>8631</b>

Source: Agriculture Department Muzaffarabad.

**AGRICULTURE STATISTICS 2015**

Estimated % of Household with Farm	84.38%
Average Farm size (Total Farm Area/No. of Farms)	4.32
Total Farm Families	301025
Total Farm Population	2652154
Plant Protection Coverage	1025(hac)

Source: Agriculture Department Muzaffarabad.

**CROPS, VEGETABLES & FRUITS 2015**

Major	Maize, Wheat, Rice
Minor	Jawar, Millet
Vegetable	Tomato, Beans, Spinach, Turnip, Karam, Potato
Fruit	Apple, Walnut, Apricot, Plump, Cherry

Source: Agriculture Department Muzaffarabad.

**FARM MACHINERY IN USAGE (PUBLIC SECTOR)**

<b>Machinery</b>	<b>Government</b>	<b>Private</b>	<b>Total</b>
Tractor	32	-	<b>32</b>
Bulldozers	7	-	<b>7</b>
Threshers	28	-	<b>28</b>
Maize Sheller	-	-	-
Tube wells /Lift Pumps	-	-	-

Source: Agriculture Department Muzaffarabad.

**MAJOR CROPS PRODUCTION FOR 2014-15**

(Metric Tons)

<b>Name</b>	<b>Quantity</b>
Maize	185195
Wheat	152451
Rice	7350
Millet	34298

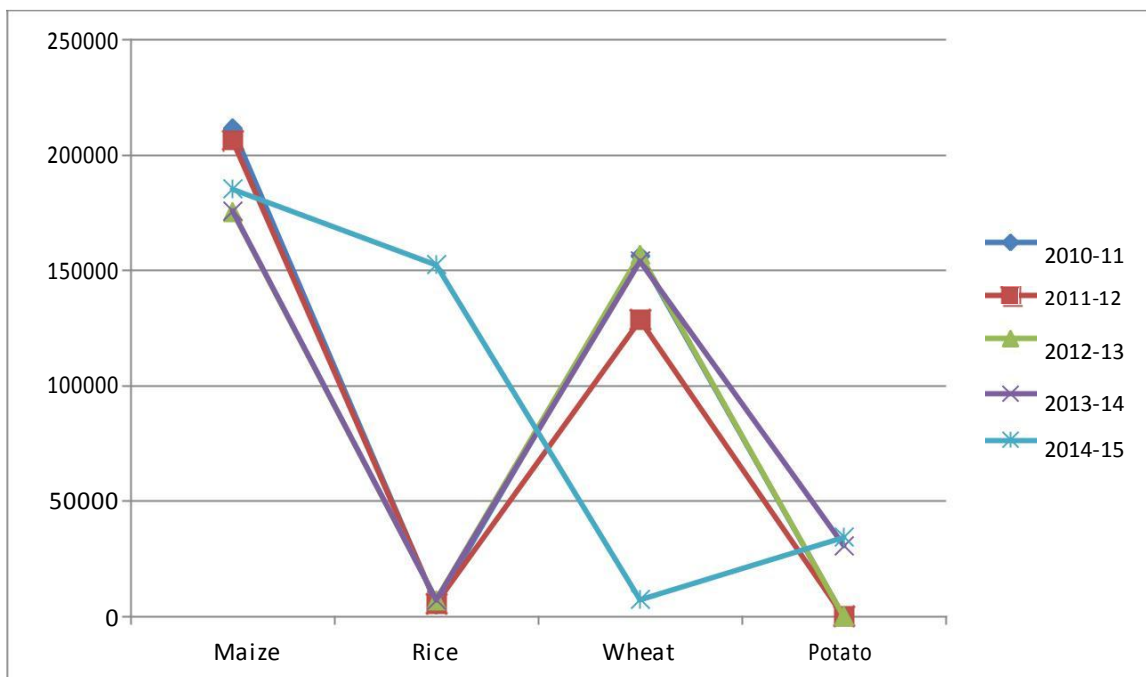
Source: Agriculture Department Muzaffarabad.

**MAJOR CROPS PRODUCTION OF LAST 5 YEARS**

(In. Metric ton)

Major Crops Production	2010-11	2011-12	2012-13	2013-14	2014-15
<b>Maize</b>	211552	206311	175377	175821	185195
<b>Rice</b>	5113	5459	7037	7040	152451
<b>Wheat</b>	156225	128486	156919	153926	7350
<b>Potato</b>	-	-	-	30698	34298

Source: Agriculture Department Muzaffarabad.





**LIVESTOCK POPULATION AND DOMESTIC POULTRY BIRDS BY ADMINISTRATIVE UNITS 2015**

On an average in AJ&K, livestock consists of 3 heads and 2 head per household for small ruminants and cattle/buffalo respectively. Overall gross annual income from livestock is Rs.1,600 per household and contribution of milk is about 68%.

Administration Unit	Number of Animals/Poultry Birds								
	Cattle	Buffalos	Sheep	Goats	Camels	Horses	Mules	Asses	Poultry
AJ&K	561107	678645	238655	1679115	595	11868	7315	57265	4271470
<b>District wise</b>									
Muzaffarabad	133102	76533	46307	227067	-	3876	2574	8762	696550
Neelum	47544	1329	50338	69845	-	3702	2101	1055	160480
Hattian	59799	34384	20805	102016	-	1742	1157	2936	312943
Bagh	41722	56996	19288	88016	-	279	436	462	342257
Haveli	17041	23281	7878	35950	-	116	178	189	139794
Poonch	32487	89516	32035	155019	-	207	376	1358	672150
Sudhnoti	41155	55692	14837	147498	-	209	109	1545	485632
Kotli	85393	185254	35484	450198	254	406	118	20301	820115
Mirpur	33224	63840	6025	147774	126	977	146	10511	262547
Bhimber	69640	91820	5658	255732	215	354	39	10146	379002

Source:-Livestock Department, Muzaffarabad

**Livestock Poultry Production for 2015**

Items	Quantity
Milk (million Liter/day)	2.773
Meat (Metric tons)	85869
Eggs (million)	274.625

Source:-Livestock Department, Muzaffarabad

**VETERINARY FACILITIES 2015**

<b>Districts</b>	Civil Veterinary Hospitals	Veterinary Dispensaries	First Aid Centers	Taball-e-dak-e-ensan-e-far	Extension Centers	A-I Centers	Labs	Livestock Disease Centre	Post-mortem facilities
Neelum	5	3	5	-	-	4	-	-	-
Hattian	3	5	4	1	12	4	-	-	-
Muzaffarabad	8	10	12	2	25	10	2	1	1
Bagh	7	5	11	2	17	10	1	-	1
Haveli	1	3	7	1	7	2	-	-	-
Poonch	5	5	19	2	21	10	1	-	1
Sudhnoti	4	4	8	1	10	5	-	-	-
Kotli	11	15	26	4	32	14	1	-	1
Mirpur	7	9	14	2	25	11	1	-	1
Bhimber	8	7	13	2	18	13	-	-	-
<b>Total</b>	<b>59</b>	<b>66</b>	<b>129</b>	<b>17</b>	<b>167</b>	<b>82</b>	<b>6</b>	<b>1</b>	<b>5</b>

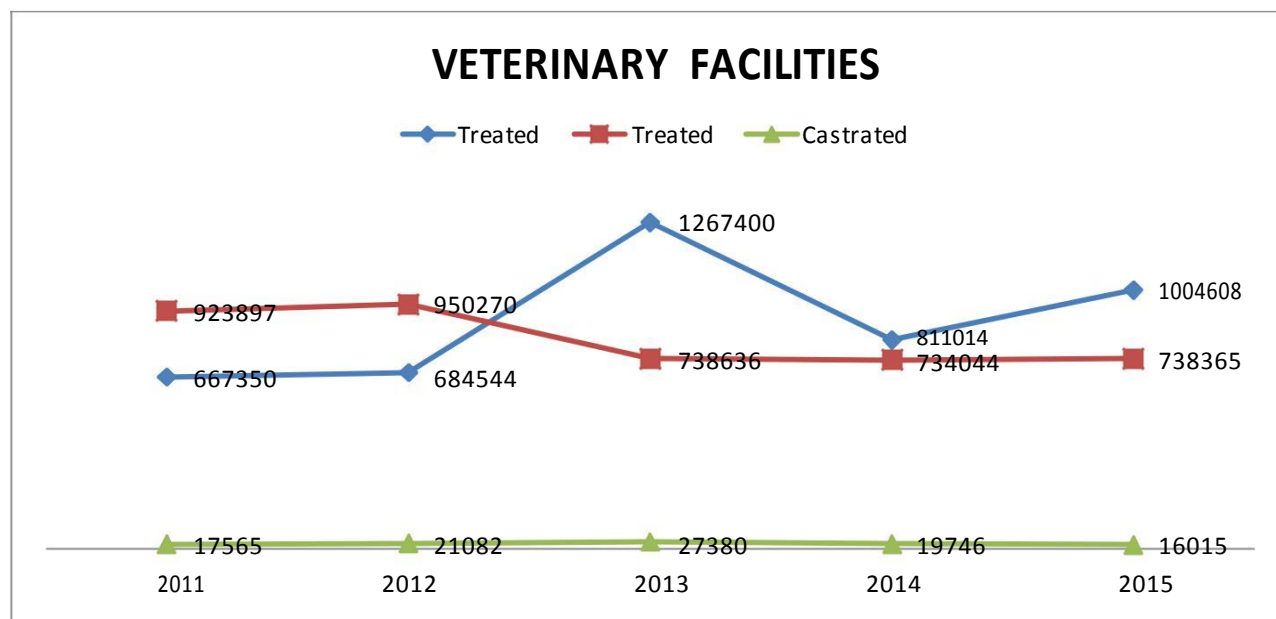
Source:-Livestock Department, Muzaffarabad



**ANIMALS VACCINATED, TREATED AND CASTRATED IN AJ&K2015**

Year	Vaccinated	Treated	Castrated
2005	55851	814964	25870
2006	893227	1105663	35938
2007	681838	817709	22336
2008	752593	895256	20979
2009	614704	961512	20343
2010	534681	1096348	19338
2011	667350	923897	17565
2012	684544	950270	21082
2013	1267400	738636	27380
2014	811014	734044	19746
2015	1004608	738365	16015

Source:-Livestock Department, Muzaffarabad



**WILDLIFE & FISHERIES 2015**

<b>1. Total Area Under Protected Areas</b>		
<b>Description</b>	<b>No.</b>	<b>Area (Hactre)</b>
National Parks	7	101441
Game Reserves	11	13664
Wildlife Sanctuary	1	185
Zoo/Captive Breeding Centers	4	16
<b>2. Fishery Facilities and Fish Production</b>		
Cold Water Fish Hatcheries	6	50000 fingerlings
Warm Water Fish Hatcheries	2	500000 fingerlings
Fish Pond in Private Sector	298	27 Total
Fish Production in Govt. Sector	From all fresh Water including Mangla	1100 Total
<b>3. Wildlife Species Diversity in AJ&amp;K</b>		
<b>Description</b>	<b>Wildlife Species in Pakistan</b>	<b>Wildlife Species in AJ&amp;K</b>
Mammals	198	60
Wildlife Birds	666	403
Fish	1198	82
Reptiles	245	48
Amphibians	25	21

Source:- Wildlife &amp; Fisheries Department, Muzaffarabad.

## FORESTS 2015

About 42.6% of the total Geographical area (0.567 million hectares), is controlled by the Forests Department. The per capita standing volume is 299.5 Cft and per capita forest area is 0.35 Acre. Annual wood demand is 1.65 million cubic meters and sustainable production is 1.94 million cubic meters. The local communities have traditional rights in terms of use of the forests and on an average three trees are burnt by one household every year for the fuel-wood requirements in the absence of alternate sources. Similarly, about 5 trees on average are required to construct a house for which the wood roofs have to be replaced after every 8-10 years.

<b>Total Geographical Area: 1.330 million Hectares</b>				
<b>3.286million Acres</b>				
<b>General Distribution of Land Utilization</b>				
	<b>Area (million)</b>		<b>% of</b>	
<b>Land Utilization</b>	<b>Hectares</b>	<b>Acres</b>	<b>FDA*</b>	<b>TGA**</b>
<b>A) Area Controlled By Deptt. Of Forest</b>	0.567	1.400	100.0	42.60
1. Area Under Productive Forests	0.379	0.936	66.8	28.5
<b>i. Area under Actual Forest</b>				
Area Under Deodar	0.018	0.044	3.1	1.3
Area Under Kail	0.036	0.090	6.4	2.7
Area Under Fir	0.042	0.103	7.4	3.2
Area Under Pine	0.057	0.141	10.1	4.3
Area Under Broad Leaves Trees	0.001	0.002	0.1	0.1
<b>Sub-Total (i)</b>	<b>0.154</b>	<b>0.38</b>	<b>27.1</b>	<b>11.6</b>
<b>ii. Area Under Thinly wooded Forests</b>				
2) Non Productive Area	0.188	0.464	33.2	14.1
<b>B</b> Area Under Cultivation	0.173	0.427	-	13.0
<b>C</b> Area Under Cultivable Waste	0.032	0.080	-	2.4
<b>D</b> Area Under Uncultivable Waste	0.558	1.379	-	42.0
<b>Total Geographical Area (A+B+C+D)</b>	<b>1.330</b>	<b>3.286</b>	<b>-</b>	<b>100</b>
<b>Forest Production-</b>				
Total Annual Forest Production			6687000 Cft	
Annual Production /Acre			4.77Cft	
Per Capita Forest Area			0.35Acre	
Per Capita Standing Volume			299.5 Cft	
Per Capita Timber (Yield)			1.65 Cft	

\* Forest Demarcated Area.\*\* Total Geographical Area

**DISTRICT WISE AREA UNDER THE CONTROL OF AJ&K FOREST DEPARTMENT 2015**

<b>District</b>	<b>Coniferous</b>	<b>Irrigated Plantation</b>	<b>Riverine Bela Forest</b>	<b>Scrub Forest</b>	<b>Coastal Forest</b>	<b>Range Lands</b>	<b>Total</b>
<b>AJ&amp;K</b>	<b>1.007</b>	<b>-</b>	<b>0.023</b>	<b>-</b>	<b>-</b>	<b>0.376</b>	<b>1.400</b>
Muzaffarabad	0.109	-	0.001	-	-	0.012	0.122
Neelum	0.360	-	-	-	-	0.317	0.677
Hattian	0.088	-	-	-	-	0.008	0.096
Bagh	0.078	-	0.003	-	-	0.018	0.099
Haveli	0.056	-	0.002	-	-	0.012	0.070
Poonch	0.050	-	0.003	-	-	0.003	0.056
Sudhnoti	0.048	-	0.004	-	-	-	0.052
Kotli	0.158	-	0.001	-	-	-	0.159
Mirpur	0.001	-	0.005	-	-	-	0.006
Bhimber	0.059	-	0.004	-	-	-	0.063

Source: AJ&amp;K Forest Department, Muzaffarabad.

**DISTRICT WISE LIST OF FOREST REST HOUSES IN AJ&K**

S. #	District	Forest Rest Houses	Status
1	Muzaffarabad	1. Rest House Danna	Damaged during earthquake
2	Neelum	1. Rest House Dawarian 2. Rest House Halmat 3. Rest House Kel 4. Rest House Sharda 5. Rest House Janavai 6. Rest House Kayan Sharif 7. Rest House Salkhala 8. Rest House Rashna/Authmaqam 9. Rest House Noori Naar	Under Construction It is in Working Condition // // // // // // // // In use of Army (Presently) Under Construction In use of Army (Presently)
3	Hattian	1. Rest House Daokhan 2. Rest House Noon Bagla, Chikar	It is in working Condition Damaged during earthquake
4	Bagh	1. Rest House Dheerkot 2. Rest House Arja	It is in Working condition. It is in Working condition.
5	Haveli	1. Rest House Mahmood Gali 2. Rest House Bhedi	Under Construction It is in Working condition.
6	Poonch	1. Rest House Abbaspur	It is in Working condition.
7	Sudhnuti	1. Rest House Pallandri 2. Rest House Baloch 3. Rest House Trarkhal	It is Working condition. It is in working condition. It is in Working condition.
8	Kotli	1. Rest House Sehnsa 2. Rest House Sehna Banah 3. Rest House Choach 4. Rest House Broohian	It is in working condition. // // // // // //
9	Mirpur	1. Rest House Mirpur 2. Rest House Dadyal	It is in working condition (Presently under use of Ehtsab. Bureau). It is in working condition
10	Bhimber	1. Rest House Bhimber 2. Rest House Choki (Smahni)	It is in working condition “ “

Source: AJ&amp;K Forest Department, Muzaffarabad.

## INDUSTRIES & MINERALS 2015

### Investment Opportunities in Azad Kashmir

The State of Azad Jammu & Kashmir by virtue of its topography, meteorology, hydrology & administrative setup provides huge opportunities of investment in various sectors. Keeping in view the investment potential in AJ&K the Government is encouraging investment in the following sectors:-

#### Industrial Investment

The Government has adopted the Industrial policy of Federal Govt. according to which all types of industries are allowed to be established in the territory of AJ&K except Arms & Ammunition, Security printing, Explosive material and Radioactive material.

In order to accelerate the pace of development, the department of Industries has established 6 Industrial Estates in various districts of Azad Kashmir with basic infrastructure like roads, water supply, and sewerage system and telephone and electricity facilities. The number of medium & large scale Industries which have already been established in different districts of Azad Kashmir is 1970.

In view of the localized requirement of AJ&K, there is huge potential for Industries like Food, Hydro power generation equipments, readymade garments, furniture and plastic products in the area.

In order to boost the Industrial Production in AJ&K, the Govt. is providing incentives to the Industrialists including concession in different taxes and providing energy on cheaper rates for first five years to run the Industries. It will be advisable that detailed feasibility of industrial products must be carried out for making final decisions of investment.

#### District wise Industrial units

District	Public	Private	Total
Muzaffarabad	--	437	437
Hattian	--	141	141
Neelum	--	162	162
Mirpur	01	190	191
Bhimber	--	510	510
Kotli	--	274	274
Poonch	--	113	113
Bagh	--	62	62
Haveli	--	38	38
Sudhnoti	--	42	42
<b>Total</b>	<b>01</b>	<b>1969</b>	<b>1970</b>

Sources : i. Directorate of Industries, Muzaffarabad.

**TYPE OF INDUSTRY**

S.#	Type	Nos.	S.#	Type	Nos.	S.#	Type	Nos.
1.	Wood Work & Furniture House	169	8.	Tyre & Rubber Factory	-	15.	Food Industry & Beverage	71
2.	Flour Mills	10	9.	Main Hotels	145	16.	Shoe Industries	36
3.	Paper Mills	04	10.	Plastic industries	08	17.	Scooter/Rickshaw (Vespa)	01
4.	Arms Factories	40	11.	Steel re-rolling & Furnaces	11	18.	Cosmetics	04
5.	Poultry Farms	761	12.	Printing Press	45	19.	PVC Pipe	18
6.	Textile Mills/Weaving	13	13.	Crush Machines	148	20.	Ice Factory	13
7.	Steel Works	226	14.	RCC pipe Industries	149	21.	Miscellaneous	98
<b>Total</b>								1970

Sources : i. Directorate of Industries Muzaffarabad.

**Details of Investment**

<b>Industrial Estate</b>	06	Industrial Unit Under Construction	181
<b>Total Area</b>	8002- Kanal	Industrial Unit in Production	145
<b>Sanctioned Investment</b>	8995.952million	Sick Units	76
<b>Investment Made</b>	3507.464million	Labour Employed	4014
<b>Sanctioned Unit</b>	455		

Sources : i. Directorate of Industries Muzaffarabad.

**Mineral Resources**

The Geological environment of AJ&K comprises generally 3 types of rocks i.e. Sedimentary, Igneous and Metamorphic. The Industrial minerals and base metals are found in all of 3 rocks spreading all over the AJ&K territory. In AJ&K mineral exploration activities started in 1973 by AKMIDC, a state owned corporation and emphasis was laid on assessment of potential economic deposits and an analysis of value of the different minerals discovered in the area so far amount to 137.915 million tons.

**INDUSTRIAL MINERALS 2015**

S.No.	Name of Mineral & Location District	Proved reserves (Million Tons)	Probable Reserves (Million Tons)	Total Reserves (Million Tons)	Value (in Millions Rs. At mine head.
1.	Ruby- Neelum	41 million grams	<b>49.000</b>	<b>100 million grams</b>	<b>50,000.00</b>
2.	Bantonite –Mirpur & Bhimer	4.000	<b>0.4000</b>	<b>0.8000</b>	<b>12,000.00</b>
3.	Granite- MZD& Neelum	100.000	400.000	500.000	1000,000.00
4.	Marble –MZD, Neelum & Kotli	19.000	15.000	34.000	34,000.00
5.	Lamonite -Hattian	0.050	0.000	0.050	90.00
6.	Coal- MZD& Kotli	01.000	29.000	30.000	120,000.00
7.	Lime Stone-MZD	70.000	30.000	100.000	20,000.00
8.	Gypsum- MZD& Hattian	4.000	0.1000	5.000	1000.00
9.	Bauxite – Kotli	0.500	0.2000	7.000	1400.00
10.	Fireclay-Kotli	0.500	0.2000	7.000	1400.00
11.	Quartzite-Kotli	0.500	0.2000	7.000	1400.00
12.	Pozzollana –Kahutta	0.500	0.500	1.000	300.00
13.	Semi Precious Stone (Tourmaline, Topaz etc.) Neelum	Very good potential indentified over an area more than 400 Square kilometer in upper Neelum Valley, reserves estimation not possible. (Estimated worth of deposit is very conservative and actual could not be more.)			25,000.00
14.	Precious metal (gold etc.) & rare earth elements . Neelum, MZD & Kahutta.	Gold and rare earth elements found in about 850 Square km belt, further narrowing down the area and confirmation under process. Worth of the deposit shall be determined on completion of exploration work.			
<b>Total</b>					<b>1,266,590.00</b>

Sources : i. Directorate of Industries Muzaffarabad.

**Development of Cottage Industry and Kashmiri Handicrafts.**

There are many investment opportunities in traditional handicrafts of Kashmir. Azad Kashmir Small Industries Corporation (AKSIC) established in 1992, is an official body committed to promote the development of handicrafts and in turn the economic betterment of the working handicraftsmen. AKSIC objective is to educate and assist the working craftsmen to set up and run their business properly. Equipped with God gifted resources and manned with requisite expertise, the AKSIC is committed to honor the buyers, demands, preferences and requirements.



**AZAD KASHMIR SMALL INDUSTRIES CORPORATION (AKSIC) 2015**

S#	Name of Center	Muzaffarabad	Neelum	Hattian	Bagh	Haveli	Poonch	Sudhnoti	Kotli	Mirpur	Bhimber	Total
1	Wood Working/ Wood Carving Development Centers	01	01	01	-	-	-	-	01	-	-	04
2	Zari Embroidery Centers	-	-	-	-	-	-	-	-	01	-	01
3	Loi/Pattu Development Centers	-	01	01	-	-	-	-	-	-	-	02
<b>Total</b>		<b>01</b>	<b>02</b>	<b>02</b>	<b>-</b>	<b>-</b>	<b>-</b>	<b>-</b>	<b>01</b>	<b>01</b>	<b>-</b>	<b>07</b>

Sources : i. Directorate of Industries Muzaffarabad.

**DISTRICTS WISE TECHNICAL EDUCATION INSTITUTION AJ&KTEVTA 2015.**

S#	Name of Institution	Muzaffarabad	Neelum	Hattian	Bagh	Haveli	Poonch	Sudhnoti	Kotli	Mirpur	Bhimber	Total
1	Govt. College of Technology	-	-	-	-	-	1	-	-	-	-	1
2	Technical training Institute	-	-	-	-	-	-	-	-	1	-	1
3	Vocational Training Institute(Male)	2	1	-	1	-	1	2	1	1	1	10
4	Vocational Youth Centers(Male)	1	-	-	1	-	-	1	1	-	1	5
5	Industrial Training Centers (Male )	-	1	1	-	-	-	-	-	-	-	2
6	Vocational Training Centers (Female)	8	2	5	3	1	6	2	8	4	4	43
7	Vocational Training Centers (Female) Shifted from Auqaf	1	-	-	-	-	1	-	1	1	1	5
8	Skill Development center(SDC)	18	3	10	12	2	10	3	13	7	4	82
<b>Grand Total</b>		<b>30</b>	<b>7</b>	<b>16</b>	<b>17</b>	<b>3</b>	<b>19</b>	<b>8</b>	<b>24</b>	<b>14</b>	<b>11</b>	<b>149</b>

Sources : i. Directorate of Industries Muzaffarabad.

ii. AJ&amp;KTEVTA, Muzaffarabad.

## AJ&amp;K TOURISM DEPARTMENT 2015

Tourist Lodges/Motel

Twin Bed Room=Rs.2000/Night

Master Bed= Rs.2500/Night

Tourist Hut= Rs.3000/Hut/Night

Districts	Location	Total No. of		No. of Twins Bed Rooms Charges Rs.2000	No. of Deluxe Rooms Charges Rs.2500	Contact No.
		Rooms	Beds			
MZD	TouristLodge, Shaheed Gali	3	5	2	1	05822-921317
	Tourist Lodge, Danna	3	5	2	1	
	Tourist Lodge, Saran (Pirchinassi)	4	8	3	1	
	Tourist Lodge, Barsala	3	5	2	1	
<b>Total</b>		<b>13</b>	<b>23</b>	<b>9</b>	<b>4</b>	
Neelum	Tourist Motel, Kel	09	16	07	02	05822-921317
	Tourist Lodge (Keran)	06	10	04	02	
	Tourist Huts Uper Neelum (6)	12	18	06	06	
<b>Total</b>		<b>27</b>	<b>44</b>	<b>17</b>	<b>10</b>	
Bagh	Tourist Lodge, Sudhan Gali	3	5	2	1	05823-920067
	Tourist Huts (3) Dheerkot	6	12	6	-	
	Tourist Lodge, Neela Butt	3	5	2	1	
	Tourist Lodge, Lasdanna	3	5	2	1	
<b>Total</b>		<b>15</b>	<b>27</b>	<b>12</b>	<b>3</b>	
Poonch	Tourist Lodge, Paniola	2	4	2	-	05824-920123
	Tourist Lodge, Koyian	3	6	3	-	
	Tourist Lodge, Banjosa	5	8	3	2	
	Tourist Lodge, Ghor Mar	2	3	1	1	
	Tourist Lodge, Tattapani	8	15	7	1	
<b>Total</b>		<b>20</b>	<b>36</b>	<b>16</b>	<b>4</b>	05824-920123
Sudhnoti	Tourist Lodge Baithak	3	5	2	1	
	Tourist Lodge pallandri	5	9	4	1	
<b>Total</b>		<b>8</b>	<b>14</b>	<b>6</b>	<b>2</b>	
Kotli	Tourist Lodge, Sardar	6	9	3	3	05826-920421
	Tourist Lodge, Teenda	3	5	2	1	
	Tourist Lodge, Fatehpur	3	5	2	1	
	Tourist Lodge, Khoiratta	5	8	3	2	
<b>Total</b>		<b>17</b>	<b>27</b>	<b>10</b>	<b>7</b>	
Mirpur	Tourist Hut, Mirpur	2	3	1	1	05827-926001
<b>Total</b>		<b>2</b>	<b>3</b>	<b>1</b>	<b>1</b>	
Bhimber	Tourist Lodge, Jandi Chontra	4	7	3	1	
<b>Total</b>		<b>4</b>	<b>7</b>	<b>3</b>	<b>1</b>	
<b>G.Total.</b>	<b>24</b>	<b>106</b>	<b>181</b>	<b>74</b>	<b>32</b>	

Source:-AJ&amp;K Tourism Department, Muzaffarabad

**AJ&K TOURISM DEPARTMENT**  
**Tourist Information Centre/Welcome Booths**

Location	TIC/TWB	status
Kohala	Tourist Welcome Booth	Operational
Brarkot	Tourist Welcome Booth	Operational
Mangla	Tourist Welcome Booth	Operational
Holar	Tourist Welcome Booth	Operational
Azad Pattan	Tourist Welcome Booth	Under Construction
Karen Neelum	Tourist Information Centre	Operational
Kotli	Tourist Information Centre	Under Construction

Source:-AJ&amp;K Tourism Department, Muzaffarabad

**Tourist Lodge/Motels Leased to Private Sector on PPP**

Tourist Lodges/Motel.

Single Bedroom = Rs.2000/Night

Twin Bed Room= Rs.2500/Night

Master Bed = Rs.3500/Night

District	Location of Guest House/Lodge/Motel	Total No. of		Single Rooms Rs.2000	Twin Bed Rooms Rs.2500	Master Bed Room Rs.3500	Contact No.
		Rooms	Beds				
Neelum	Tourist Lodges, Kutton	7	11	3	4	-	0343-5800000
	Tourist Motel (2) Neelum, (Karen)	18	32	-	14	4	
	Tourist Hut Dawarrian	2	4	-	2	-	
	Youth Hostel#1 Sharda	2	4	-	2	-	
	Youth Hostel #2 Sharda	3	6	-	3	-	
	Tourist Lodges, Sharda	5	9	-	4	1	
<b>Total `</b>	<b>6</b>	<b>37</b>	<b>66</b>	<b>3</b>	<b>29</b>	<b>5</b>	

Source:-AJ&amp;K Tourism Department, Muzaffarabad

# **Development Outlays** **(1955-2015)**



## ALLOCATION AND UTILIZATION 2015

(Rs. In Million)

S.No	Year	ADP Allocation	Utilization	%age utilization
1.	1 <sup>st</sup> Five Year Plan (1955-60)	10.000	10.000	100
2.	2 <sup>nd</sup> Five Year Plan (1960-65)	39.420	39.400	100
3.	3 <sup>rd</sup> Five Year Plan (1965-70)	88.100	88.000	99
4.	No Plan Period (1970-78)	604.100	576.000	95
5.	5 <sup>th</sup> Five Year Plan (1978-83)	1216.800	1215.500	99
6.	6 <sup>th</sup> Five Year Plan (1983-88)	3174.000	3102.300	98
7.	7 <sup>th</sup> Five Year Plan (1988-93)	4916.000	4709.900	98
8.	8 <sup>th</sup> Five Year Plan (1993-98)	8277.300	7768.900	94
9.	Non Plan Period (1998-2005)	20568.409	19239.389	93.5
10.	*MTDF 2005-10	35985.000	32599.315	90.6
	<b>MTDF 2010-15</b>			
11.	2010-11	6282.788	5923.365	94.3
12.	2011-12	8284.00	8229.000	99.3
13.	2012-13	9547.036	8074.955	84.6
14.	2013-14	11432.056	11000.736	96
15.	2014-15	10500.000	10459.334	99.6

Source: \*Planning &amp; Development Department, Muzaffarabad

\*\*MTDF: Medium Term Development Framework.

**AZAD JAMMU & KASHMIR****SECTOR WISE REVISED ALLOCATION & UTILIZATION OF ADP 2014-15**

Rs. In million

S #	Sector/Sub-Sector	Allocation 2014-15		Amount Released	Utilization	% age
		Original	Revised			
1	Agriculture	237.000	237.000	237.000	240.351	101
2	Civil Defence	50.000	50.000	50.000	50.007	100.014
3	Development Authorities	150.000	133.000	133.000	132.655	99.7
4	Education	825.475	799.597	799.597	799.251	99.9
5	Environment	28.000	28.000	28.000	27.903	99.7
6	Foreign Aided Projects (AJ&K CDP)	107.000	100.500	100.500	100.450	99.9
7	Forestry/Fisheries	365.000	410.000	410.000	409.059	99.7
8	Health	320.831	272.614	272.614	271.510	99.6
9	Industries & Minerals	195.000	154.000	154.000	152.945	99.3
10	Transport	48.000	0.500	0.500	0.500	0
11	Information & Media Dev.	10.00	10.00	10.00	10.334	103
12	Information Technology	125.000	125.000	125.000	124.762	99.8
13	Local Govt. & Rural Dev.	850.000	1070.00	1070.00	1079.027	100.8
14	PP&H	705.000	705.000	705.000	705.172	100.02
15	Rehabilitation/Resettlement	110.000	110.000	110.000	111.222	101
16	Power	1245.000	1222.000	1222.000	1221.696	99.9
17	Research & Dev.	130.000	98.500	98.500	103.336	104.9
18	Social Welfare & Women Dev.	41.000	34.000	34.000	33.923	99
19	Sports	155.000	105.000	105.000	77.519	74
20	Tourism	115.000	115.000	115.000	115.184	100
21	Communication & Works	4687.694	4719.889	4719.889	4692.528	99
	<b>Total</b>	<b>10500.000</b>	<b>10500.000</b>	<b>10500.000</b>	<b>10459.334</b>	<b>99.6</b>

Sources:- Planning &amp; Development Deptt.

**AZAD JAMMU & KASHMIR**  
**NON-DEVELOPMENT EXPENDITURE FOR THE YEAR 2014-15**

S.#	Department	Revised Estimates 2014-15	Budget Estimates 2015-16
1	General Administration	1976.906	2150.309
2	Board of Revenue	640.520	627.800
3	Stamps	14.600	14.400
4	Land Record & Settlement	21.380	20.800
5	Relief & Rehabilitation	722.920	735.260
6	Pension	5,610.000	6500.000
7	Public Relation	91.420	91.203
8	Administration of Justice	1489.790	1024.110
9	Home (Police)	3793.100	3920.617
10	Jails	117.530	125.630
11	Civil Defense	85.230	88.230
12	Armed Service Board	45.400	49.630
13	Communication & Works	2,283.500	2423300
14	Education	17289.440	18547.754
15	Health	4015.000	5226.000
16	Sports Youth & Culture & Transport	90.000	89.450
17	Religious Affairs	116.630	126.280
18	Social Affairs & Woman Affairs	280.260	213.330
19	Agriculture	502.470	531.330
20	Animal Husbandry	505.980	541.340
21	Food	186.700	170.700
22	State Trading	5974.024	3000.000
23	Forests	688.660	713.000
24	Cooperative	46.820	50.830
25	Electricity	5452.600	5775.400
26	Local Govt. & Rural Dev.	376.660	394.350
27	Industry, Labor & Mineral Resources	97.300	105.400
28	Printing Press	47.700	44.800
29	Sericulture	63.000	66.350
30	Tourism / Wildlife / Fisheries	112.560	117.540
31	Miscellaneous (Grants)	2757.900	3014.830
	<b>Total</b>	<b>55424.000</b>	<b>56500.000</b>

Source:-Finance Department, Muzaffarabad.



**TOTAL GENERAL REVENUE RECEIPTS IN AJ&K 2014-15 & 2015-16***Rs. In Million*

<b>S #</b>	<b>Department</b>	<b>Revised Estimates 2014-15</b>	<b>Budget Estimates 2015-16</b>
1	Provincial Excise	4800.000	5520.000
2	Land Record & Settlement	26.000	27.000
3	Stamps	126.000	140.000
4	Forests	260.000	325.000
5	Registration	45.000	50.000
6	Administration of Justice	70.000	73.000
7	Jails	0.200	0.200
8	Home (Police)	35.000	40.000
9	Education	130.000	145.000
10	Health	62.000	70.000
11	Agriculture	3.300	0.360
12	Animal Husbandry	14.300	30.000
13	Industries, Labour & Minerals	27.500	30.000
14	Sericulture	3.500	40.000
15	Miscellaneous	1813.700	1467.600
16	Communication & Works	160.000	170.000
17	Electricity	10000.000	11000.000
18	Printing Press	14.000	15.000
19	Armed Service Board	19.000	22.000
20	Religious Affairs	275.000	30.000
21	Food	1200.000	1320.000
22	Tourism / Wildlife / Fisheries	38.000	45.000
	<b>Total (1-22)</b>	<b>18875.000</b>	<b>20527.400</b>
23	Water Usage Charges Mangla	778.000	780.000
24	80% Income from Kashmir Council	9500.000	13000.000
25	Federal Tax Share	15750.000	16750.000
26	Revenue Deficit Gran	10521.000	9402.600
	<b>Total (23-26)</b>	<b>36549.000</b>	<b>3993.260</b>
27	Adjustment of Overdraft	0	-39.960
	<b>G. Total</b>	<b>55424.000</b>	<b>56500.0000</b>

Source:-Finance Department, Muzaffarabad.

**DISTRICT WISE INCOME AND EXPENDITURE OF ALL MUNICIPAL COMMITTEES IN AJ&K 2015****(Rs. In Million)**

<b>District</b>	<b>Name of Institutions</b>	<b>Income</b>	<b>Total Exp.</b>	<b>Dev. Exp.</b>	<b>Non- Dev. Exp.</b>	<b>Pay &amp; Allow.</b>
M.abad	District Council MZD	35.443	35.443	7.465	5.631	22.346
	Municipal corporation MZD	152.962	152.962	19.601	51.146	82.215
	Municipal Committee Pattika	3.814	3.814	0.895	2.123	0.796
	Town Cmmittee Garhi Dupatta	1.610	1.610	0.538	0.338	0.734
	<b>Total</b>	<b>193.829</b>	<b>193.829</b>	<b>28.499</b>	<b>59.239</b>	<b>106.090</b>
Hattian Bala	District Council Hattian Bala	8.538	8.538	3.407	5.131	0.000
	Municipal Committee Hattian Bala	2.517	2.517	0.300	2.217	0.000
	Town Committee Chakar	0.000	0.000	0.000	0.000	0.000
	<b>Total</b>	<b>11.054</b>	<b>11.054</b>	<b>3.707</b>	<b>7.348</b>	<b>0.000</b>
Neelum	District Council Neelum	6.86	6.86	1.443	1.8777	3.366
	Municipal Committee Athmaqam	8.565	8.565	0.371	1.361	6.834
	Town Committee Kail	0.000	0.000	0.000	0.000	0.000
	<b>Total</b>	<b>15.251</b>	<b>15.251</b>	<b>1.814</b>	<b>3.237</b>	<b>10.200</b>
Bagh	District Council Bagh	5.998	5.998	1.516	2.527	1.955
	Municipal corporation Bagh	22.069	22.069	0.699	12.471	8.899
	Town Cmmittee Dheerkot	3.014	3.014	1.308	1.483	1.223
	Town Cmmittee Haarhigehl	0.000	0.000	0.000	0.000	0.000
	Town Cmmittee Arjah	0.000	0.000	0.000	0.000	0.000
	Town Cmmittee Rehera	0.000	0.000	0.000	0.000	0.000
	<b>Total</b>	<b>31.081</b>	<b>31.081</b>	<b>2.523</b>	<b>16.481</b>	<b>12.077</b>
Haveli	District Council Haveli	4.238	4.238	0.561	0.497	3.181
	Municipal Committee Kahoota	4.269	4.269	0.200	1.605	2.464
	<b>Total</b>	<b>8.507</b>	<b>8.507</b>	<b>0.761</b>	<b>2.102</b>	<b>5.644</b>
Poonch	District Council Poonch	9.839	9.839	3.586	2.221	4.032
	Municipal corporation Rawalakot	29.771	29.771	8.993	10.096	10.682
	Municipal Cmmittee Hajira	6.682	6.682	1.293	1.840	3.550
	Town Cmmittee Khaigala	2.088	2.088	0.153	0.125	1.811
	Town Cmmittee Ali Sojal	2.027	2.027	0.153	0.152	1.722
	Town Committee Abbaspur	2.731	2.731	0.177	1.060	1.493
	<b>Total</b>	<b>53.139</b>	<b>53.139</b>	<b>14.355</b>	<b>15.495</b>	<b>23.289</b>
Sudhnoti	District Council Pallandri	5.052	5.052	1.352	2.370	1.331
	Municipal Committee Pallandri	7.284	7.284	0.417	3.179	3.688
	Town Committee Baloch	0.000	0.000	0.000	0.000	0.000
	Town Committee Baloch	0.000	0.000	0.000	0.000	0.000
	<b>Total</b>	<b>12.337</b>	<b>12.337</b>	<b>1.769</b>	<b>5.549</b>	<b>5.018</b>
Kotli	District Council Kotli	40.883	40.883	23.902	6.164	10.817
	Municipal corporation Kotli	77.707	77.707	19.950	22.381	35.376
	Municipal Committee Chorri	15.853	15.853	7.855	2.036	5.961
	Municipal Committee Sehnssa	10.489	10.489	1.976	2.877	5.636
	Municipal Committee Sakandarabad	6.571	6.571	0.419	1.522	4.630

## Azad Jammu &amp; Kashmir, at a Glance 2015

	Town Cmmittee Rajdahani	1.964	1.964	0.153	0.036	1.775
	Town Committee Chowk Sahiban	2.207	2.207	0.153	0.151	1.903
	Town Committee Khoi Ratta	5.062	5.062	0.466	3.252	1.344
	<b>Total</b>	<b>160.735</b>	<b>160.735</b>	<b>54.874</b>	<b>38.420</b>	<b>67.442</b>
Mirpur	District Council Mirpur	59.389	59.389	31.063	7.766	20.560
	Municipal corporation Mirpur	141.329	141.329	25.899	3.311	112.1120
	Municipal Committee Islam Garh	12.567	12.567	2.344	2.923	7.300
	Municipal Committee Chaksawari	15.453	15.453	6.945	2.092	6.415
	Municipal Committee Dadyal	28.143	28.143	10.890	5.155	12.098
	Town Committee Potha Bansi	4.338	4.338	1.548	1.174	1.617
	Town Committee Khaliq Abad	2.681	2.681	0.312	0.803	1.566
	<b>Total</b>	<b>263.899</b>	<b>263.899</b>	<b>79.002</b>	<b>23.223</b>	<b>161.675</b>
Bhimber	District Council Bhimber	42.742	42.742	22.197	6.398	14.147
	Municipal Committee Bhimber	23.945	23.945	9.713	5.416	8.817
	Town Committee Samahni	2.252	2.252	0.357	0.761	1.134
	<b>Total</b>	<b>68.939</b>	<b>68.939</b>	<b>32.267</b>	<b>12.574</b>	<b>24.098</b>
<b>Grand Total AJ&amp;K</b>		<b>818.770</b>	<b>818.770</b>	<b>219.569</b>	<b>183.668</b>	<b>415.534</b>

Source : Local Govt. Board.

**METRIC CONVERSION TABLE**

<b>Length</b>	
1 inch	2.539 Centimeters
1 Foot	0.305 Meter
1 Yard	0.914 Meter
1 Furlong	0.201 Kilometers
1 Mile	1.609 Kilometers
1 Nautical mile	1.852 Kilometers
1 Centimeter	0.39 Inch
1 Meter	3.2808 Feet
1 Meter	1.09361 Yard
1 Kilometer	4.97095 Furlong
1 Kilometer	0.62 Mile
1 Kilometer	0.54 Nautical Mile
1 Cubic Meter	35.314724 Cubic Feet
1 Square Kilometer	0.386102 square Mile
1 Square Kilometer	247.1047 Acres
<b>Area</b>	
1 Acres	0.405 Hectare
1 Hectare	2.471 Acres
<b>Weight</b>	
1 Chattank	0.058 Kilogram
1 Seer	0.9333 Kilogram
1 Lb	0.454 Kilogram
1 Maund	37.324 Kilogram
1 Tonne	26.792 Maunds
1 Tonne	0.984 Tons
1 Metric Ton(2250 Lbs.)	1000 Kilogram
1 Long Ton(2250 Lbs.)	1016 Kilogram
1 Short Ton(2250 Lbs.)	907 Kilogram

1 Ounce	0.028 Kilogram
1 Kilogram	17.147 Chattank
1 Kilogram	1.07 Seer
1 Kilogram	2.2046 Lbs.
1 Kilogram	0.027 Maund
1 Kilogram	0.00098 Long Ton
1 Kilogram	0.0011 Short Ton
1 Kilogram	35.273 Ounce
1 Bale	170 Kg
1 Bale	375 Lbs.
<b>Volume</b>	
1 Pint	0.568Liter
1 Gallon (Imp.)	4.546Liters
1 Gallon(U.S.)	3.785Liters
1 Liter	1.761Pints
1 Liter	0.22 Gallon (Imp.)
1 Liter	0.264Gallon (U.S.)
1 Barrel	158.98 Liters